

Shown: VP-11

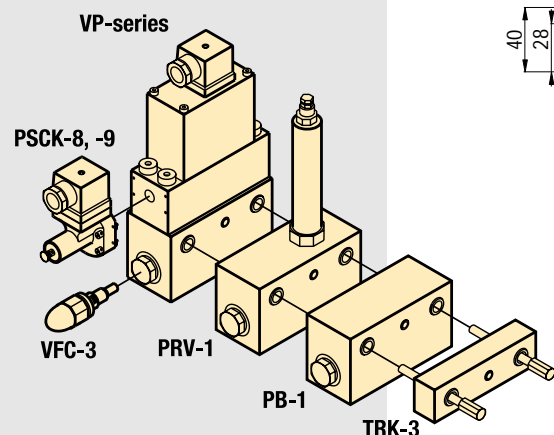


VP-series

Solenoid directional valves control the direction of the oil flow to each cylinder port.

Application

VP-valve in combination with all its options in the drawing and photo below. For remote mounting of these valves use WM-10 manifold (□ 90).



Solenoid directional valves

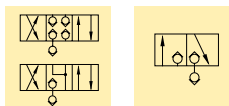
- Dual poppet valve design for zero internal leakage
- Inlet check-valve standard
- High cycle switching
- Stackable to 8 valve stations high
- 17 - 350 bar operational pressure
- Oil flow capacity 7 l/min @ 350 bar
- Oil flow capacity 15 l/min @ 0 bar
- G¹/₄" oil connections and integrated filtration

Pressure: 350 bar

Max. Flow: 15 l/min @ 0 bar

Voltage: 24 VDC

- Ⓔ Válvulas de control
- Ⓕ Electro distributeurs
- Ⓖ Wegesitzventile



Options

PB-1 Auxiliary block

□ 90 ▶

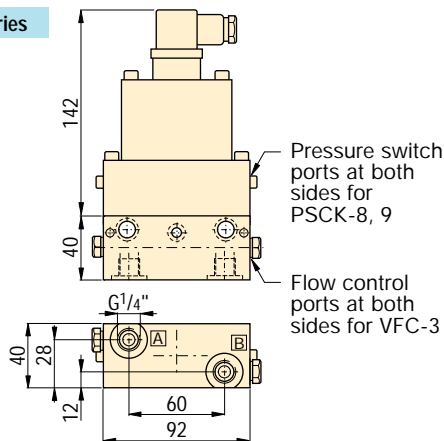


Tie Rod Kits

□ 90 ▶



VP series



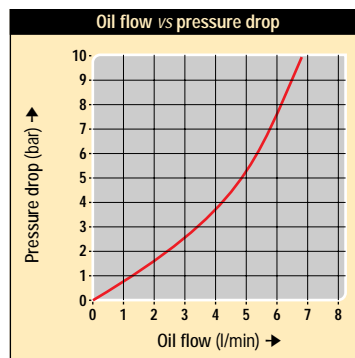
■ Enerpac VP-series valves stackbuilt on a workholding pump.



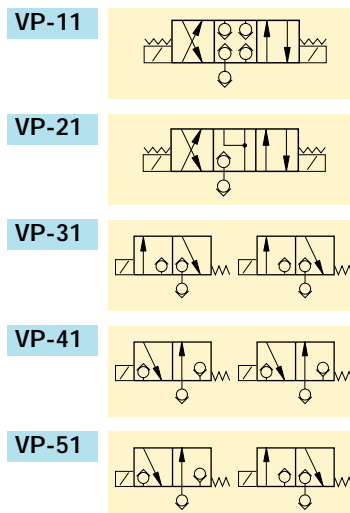
Product selection

Voltage @ current	Model number	Used with cylinder(s)
at 50/60 Hz @ 1,13 Amps		
▼ 4/3 Closed centre		
24 VDC @ 1,13 A	VP-11	1x DA / 2xSA
▼ 4/3 Float centre		
24 VDC @ 1,13 A	VP-21	1x DA / 2xSA
▼ 3/2 Normally closed		
24 VDC @ 1,13 A	VP-31	1x DA / 2xSA
▼ 3/2 Normally open		
24 VDC @ 1,13 A	VP-41	1x DA / 2xSA
▼ 3/2 one port normally open, one port normally closed		
24 VDC @ 1,13 A	VP-51	1x DA / 2xSA

Note: DIN 43650 electrical connector included. Valve weight 3,0 kg.



Flow Path ¹⁾



¹⁾ See page 129 for full hydraulic scheme.