

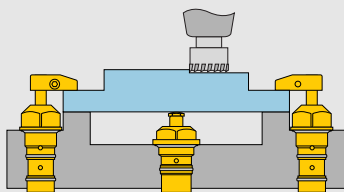
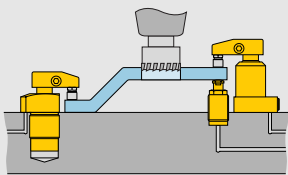
# Work supports - Hydraulic advance

Shown: WFM-72, WFL-112



## WF series

Enerpac work supports provide either additional non-fixed location points to the clamps, or support to larger or thin section workpiece components, always in order to minimize workpiece deflection during machining.



In order to load the workpiece sideways over the work supports, hydraulic advanced models are being used.



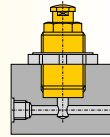
## For unobstructed part loading

- Plunger stays retracted until pressure is applied allowing unobstructed loading
- Low pressure lock-up capability enables the use of machine tool hydraulic systems
- High rated support capacities allow for more compact fixture design
- Corrosion resistant materials - compatible with most coolants and environments
- Threaded and manifold air vent ports allow fixturing that prevents coolants and debris from being ingested into the mechanism
- Minimized deflection increases machining accuracy
- Multiple mounting configurations for design flexibility

## Four mounting styles

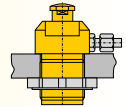
### WFM series, Manifold models

Eliminates the need for fittings and tubing on the fixture.



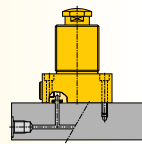
### WFT series, Threaded models

Offers the flexibility of side or bottom porting.



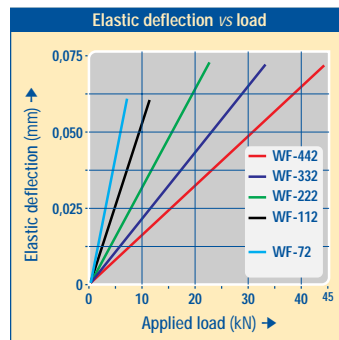
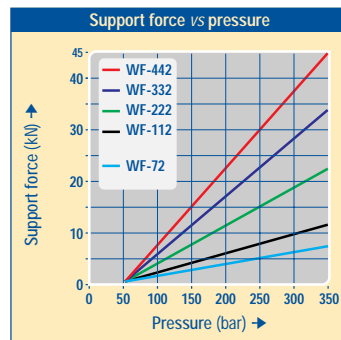
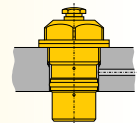
### WFL series, Lower flange models

Plumbed directly - no fixture hole required.



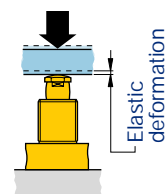
### WFC series, Cartridge models

Can be designed into narrow fixture plates as thru-hole mounting is fully functional.



### Deflection chart:

Elastic deformation of the work support resulting from the application of load.



## Product selection

Max. support force	Support plunger stroke	Manifold mount	Threaded body	Lower flange	Cartridge style	Operating pressure		Plunger contact spring force		Oil Capacity	Max. oil flow
						min. bar	max. bar	ext. N	retr. N		
7,3	9,7	WFM-72	WFT-72	-	WFC-72	48	350	8,9	25,8	0,66	0,7
11,1	9,7	-	-	WFL-112	WFC-112	48	350	15,1	23,1	0,98	1,0
22,2	10,4	-	-	WFL-222	WFC-222	48	350	9,3	86,8	3,11	3,1
33,4	13,5	-	-	WFL-332	-	48	350	17,8	77,9	3,93	3,9
44,5	16,5	-	-	WFL-442	-	48	350	14,7	97,9	4,92	4,9