

Swing cylinders - Threaded body models

Shown: STRD-52, STRD-202



Swing cylinders
Work supports

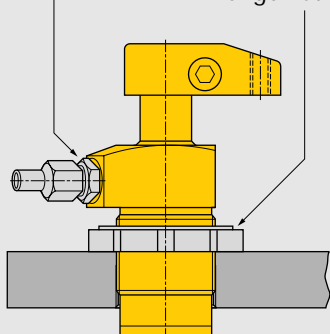
ST series

Enerpac threaded body swing cylinders are threaded directly into the fixture.

The cylinder height is adjusted to the appropriate height, and then locked in place using a flange nut (□ 68).

BSPB oil connection

Flange nut



■ Threaded body swing cylinders allow the clamp to be buried in the fixture to minimize the required area, while the height remains adjustable.


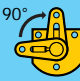


Cylinders can be threaded directly into fixture

...can be secured at any height

- Body thread for precise cylinder height positioning
- Threaded port connection
- Easy installation and removal
- Greatest flexibility in fixture design

Product selection

| Clamping force ¹⁾ | Stroke | | Left turning  | Right turning  | Cylinder effective area | | Oil capacity | | Max. oil flow ¹⁾ | Standard clamp arm |
|------------------------------|--------|--------|---|--|-------------------------|-----------------|-----------------|-----------------|-----------------------------|--------------------|
| | kN | Clamp. | | | Total | cm ² | cm ³ | cm ² | | |
| ▼ Single-acting | | | | | | | | | | |
| | | | Model number ²⁾ | | | | | | | |
| 2,1 | 8 | 16,5 | STLS-22 | STRS-22 | 0,77 | - | 1,31 | - | 0,2 | CAS-22 |
| 4,9 | 10 | 22,6 | STLS-52 | STRS-52 | 1,81 | - | 4,10 | - | 0,4 | CAS-52 |
| 8,0 | 12 | 22,1 | STLS-92 | STRS-92 | 3,16 | - | 6,88 | - | 1,0 | CAS-92 |
| 10,7 | 13 | 28,4 | STLS-121 | STRS-121 | 4,06 | - | 11,47 | - | 1,6 | CAS-121 |
| 17,4 | 14 | 27,9 | STLS-202 | STRS-202 | 7,10 | - | 19,99 | - | 2,3 | CAS-202 |
| 33,1 | 16 | 30,0 | STLS-352 | STRS-352 | 12,39 | - | 37,20 | - | 3,9 | CAS-352 |
| ▼ Double-acting | | | | | | | | | | |
| | | | Model number ²⁾ | | | | | | | |
| 1,3 | 7 | 13,0 | STLD-11 | STRD-11 | 0,45 | 0,97 | 0,66 | 1,31 | 0,2 | CAS-11 |
| 2,2 | 8 | 16,5 | STLD-22 | STRD-22 | 0,77 | 1,55 | 1,31 | 2,46 | 0,2 | CAS-22 |
| 5,6 | 10 | 22,6 | STLD-52 | STRD-52 | 1,81 | 3,81 | 4,10 | 8,52 | 0,4 | CAS-52 |
| 9,0 | 12 | 22,1 | STLD-92 | STRD-92 | 3,16 | 8,06 | 6,88 | 17,70 | 1,0 | CAS-92 |
| 11,6 | 13 | 28,4 | STLD-121 | STRD-121 | 4,06 | 7,94 | 11,47 | 22,94 | 1,6 | CAS-121 |
| 18,7 | 14 | 27,9 | STLD-202 | STRD-202 | 7,10 | 15,16 | 19,99 | 42,61 | 2,3 | CAS-202 |
| 33,8 | 16 | 30,0 | STLD-352 | STRD-352 | 12,39 | 23,74 | 37,20 | 71,28 | 3,9 | CAS-352 |

¹⁾ With standard clamp arm. Clamp arms are sold separately (□ 10, 24). Clamping forces for single-acting models are reduced in order to overcome return spring force.

²⁾ For models with straight plunger movement, replace L or R with S.

Note: Call Enerpac to order models with imperial thread and SAE port connections.

Dimensions in mm [□ 68]

| Left turning models | A | B | C | C1 | D | D1 | D2 | F | G | H |
|---------------------|-----|-----|------|----|--------------|------|----|----|-------|----|
| ▼ Single-acting | | | | | | | | | | |
| STLS-22 | 112 | 59 | 42,5 | 25 | M28 x 1,5 | 39,4 | 33 | 10 | G1/8" | 10 |
| STLS-52 | 135 | 69 | 49,6 | 25 | M35 x 1,5 | 47,5 | 38 | 16 | G1/8" | 10 |
| STLS-92 | 143 | 80 | 55,1 | 30 | M48 x 1,5 | 62,5 | 48 | 25 | G1/4" | 13 |
| STLS-121 | 171 | 86 | 55,4 | 25 | 1.875-16 UNF | 60,5 | 51 | 22 | SAE#4 | 10 |
| STLS-202 | 165 | 93 | 62,9 | 32 | M65 x 1,5 | 75,9 | 65 | 32 | G1/4" | 13 |
| STLS-352 | 186 | 105 | 65,0 | 32 | M80 x 2 | 88,4 | 80 | 38 | G1/4" | 13 |
| ▼ Double-acting | | | | | | | | | | |
| STLD-11 | 95 | 53 | 40,9 | 25 | .750-16 UNF | 30,5 | 20 | 8 | SAE#2 | 10 |
| STLD-22 | 112 | 59 | 42,5 | 25 | M28 x 1,5 | 39,4 | 33 | 10 | G1/8" | 10 |
| STLD-52 | 135 | 69 | 49,6 | 25 | M35 x 1,5 | 47,5 | 38 | 16 | G1/8" | 10 |
| STLD-92 | 143 | 80 | 55,1 | 30 | M48 x 1,5 | 62,5 | 48 | 25 | G1/4" | 13 |
| STLD-121 | 171 | 86 | 55,4 | 25 | 1.875-16 UNF | 60,5 | 51 | 22 | SAE#4 | 10 |
| STLD-202 | 165 | 93 | 62,9 | 32 | M65 x 1,5 | 75,9 | 65 | 32 | G1/4" | 13 |
| STLD-352 | 186 | 105 | 65,0 | 32 | M80 x 2 | 88,4 | 80 | 38 | G1/4" | 13 |

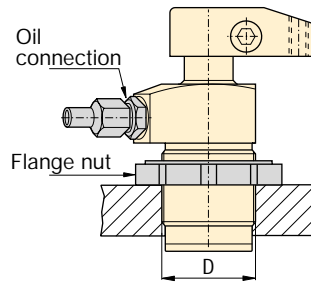
Note: Dimensions shown with standard clamp arm.



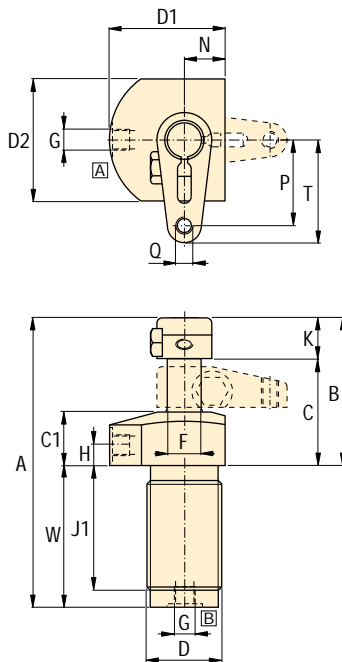
A Installation dimensions
in mm

| Clamping ¹⁾ Force kN | Fixture hole thread size D |
|---------------------------------------|----------------------------------|
| 1,3 | .750-16 UNF |
| 2,2 | M28 x 1,5 |
| 5,6 | M35 x 1,5 |
| 9,0 | M48 x 1,5 |
| 11,6 | 1.875-16 UNF |
| 18,7 | M65 x 1,5 |
| 33,8 | M80 x 2 |

¹⁾ With standard clamp arm.

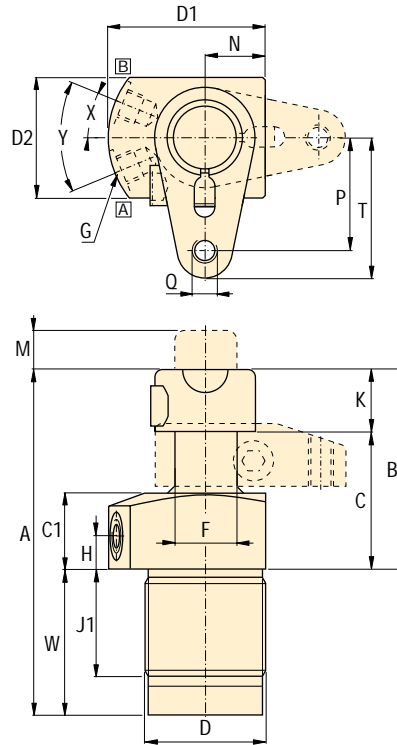


-11



A = Clamping
B = Unclamping (venting)

-22, -52, -92, -121, -202, -352



Swing cylinders
Work supports

Linear cylinders

Power sources

Valves

System
components

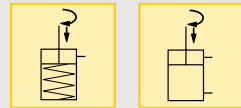
Yellow pages

Force: 1,3 - 33,8 kN


Stroke: 13 - 30 mm


Pressure: 35 - 350 bar

- E** Cilindros giratorios
- F** Vérins de bridage pivotants
- D** Schwenkspannzylinder





B Options

Clamp arms  [24](#)

Work supports  [28](#)

Collet-Lok® swing cylinders  [22](#)

Accessories  [68](#)

Sequence valves  [92](#)

! Important

Single-acting cylinders can be vented through the manifold port.

In case there is a risk of machining coolants and debris being inhaled via the breather vent, it is recommended to pipe this port to an area outside the fixture that is protected from machining coolants and debris.

Do not exceed maximum flow rates.

| | J1 | K | M | N | P | Q | T | W | X | Y | kg | Right turning models |
|-----------------|----|----|------|------|----|-------------|----|------|-------|-----|-----|----------------------|
| Single-acting ▼ | | | | | | | | | | | | |
| | - | 16 | - | 15,5 | 24 | M6 x 1 | 31 | - | 25° | - | 0,5 | STRS-22 |
| | - | 19 | - | 19,1 | 40 | M8 x 1,25 | 48 | - | 25° | 50° | 1,1 | STRS-52 |
| | 43 | 25 | 15,5 | 23,9 | 45 | M10 x 1,5 | 56 | 63,0 | 22,5° | 45° | 2,0 | STRS-92 |
| | - | 30 | - | 25,4 | 51 | .375-16 UNC | 62 | - | 25° | 50° | 1,6 | STRS-121 |
| | 55 | 30 | 23,6 | 32,5 | 55 | M12 x 1,75 | 70 | 71,9 | 22,5° | 45° | 3,2 | STRS-202 |
| | 65 | 40 | 27,9 | 39,9 | 68 | M16 x 2 | 83 | 81,5 | 22,5° | 45° | 5,5 | STRS-352 |
| Double-acting ▼ | | | | | | | | | | | | |
| | 37 | 12 | - | 9,9 | 20 | #10-32 UNF | 25 | 42,2 | - | 50° | 0,5 | STRD-11 |
| | 53 | 16 | - | 15,5 | 24 | M6 x 1 | 31 | - | 25° | 50° | 0,5 | STRD-22 |
| | 66 | 19 | - | 19,1 | 40 | M8 x 1,25 | 48 | - | 25° | 50° | 1,1 | STRD-52 |
| | 43 | 25 | - | 23,9 | 45 | M10 x 1,5 | 56 | 63,0 | 22,5° | 45° | 2,0 | STRD-92 |
| | 86 | 30 | - | 25,4 | 51 | .375-16 UNC | 62 | - | 25° | 50° | 1,6 | STRD-121 |
| | 55 | 30 | - | 32,5 | 55 | M12 x 1,75 | 70 | 71,9 | 22,5° | 45° | 3,5 | STRD-202 |
| | 65 | 40 | - | 39,9 | 68 | M16 x 2 | 83 | 81,5 | 22,5° | 45° | 5,5 | STRD-352 |