

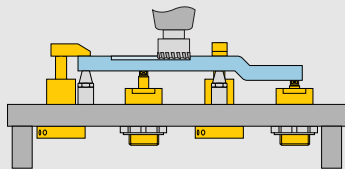
Work supports - Collet-Lok® Design

Shown: MPFS-100, MPTS-100



MP series

Enerpac work supports provide either additional non-fixed location points to the clamps, or support to larger or thin section workpiece components, always in order to minimize workpiece deflection during machining. The Collet-Lok® design does not require hydraulic system pressure to maintain support position.



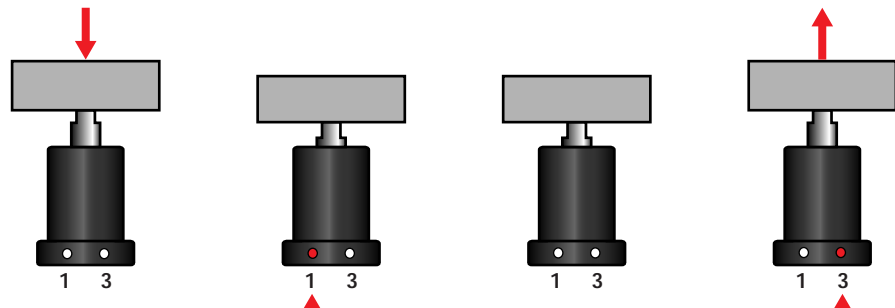
■ While pallet nr. 1 is in the machining chamber, a new work piece is loaded on to pallet nr. 2.



Hydraulically locked, mechanically maintained work support

- Collet-Lok® design allows the work support to maintain support position after the hydraulic pressure is removed
- Collet-Lok® maintains a higher level of safety, as it is not dependent on hydraulic supply pressure
- Low deflection: lowest deflection of any work support available
- Threaded or flanged body increases mounting flexibility

Collet-Lok® sequence



Step 1

Install the workpiece on the support cylinder. The plunger position will adjust to the contour of the workpiece.

Step 2

Pressurize oil port #1. The plunger will be locked in the supporting position.

Step 3

Depressurize oil port #1. Cylinder can be uncoupled from hydraulics and still support the workpiece.

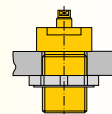
Step 4

Pressurize oil port #3. The plunger will be unlocked. When the workpiece is removed, plunger will extend into its original position.

Mounting style

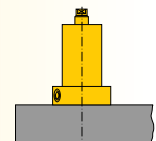
MPT series, Threaded models

Offers the flexibility of side or bottom porting.



MPF series, Flange models

Plumbed directly, no fixture hole required.



Product selection

Max. support force	Support plunger stroke	Flange models	Threaded Models	Operating pressure		Locking system displacement		Plunger contact spring force	Max. oil flow
				min.	max.	lock	unlock		
kN	mm			bar		cm ³		N	l/min
8,9	10	MPFS-100	-	100	350	3,93	3,93	20,0	6,6
17,8	10	MPFS-200	-	100	350	6,06	6,06	35,2	6,6
44,5	20	MPFS-450	-	100	350	18,03	18,03	300,4	6,6
8,9	10	-	MPTS-100	100	350	3,93	3,93	15,0	6,6
17,8	10	-	MPTS-200	100	350	6,06	6,06	30,0	6,6





Note: - Minimum unlock pressure must be at least 100 bar above lock pressure.



Force:	8,9 - 44,5 kN
Stroke:	9,9 - 20,1 mm
Pressure:	100 - 350 bar

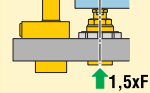
- (E) Cilindros de soporte
- (F) Vérin anti-vibreur
- (D) Abstützylinder

Options

- Collet-Lok® swing cylinders  [22](#)
- Autocouplers  [100](#)
- Positive clamping cylinders  [62](#)
- Sequence Valves  [92](#)

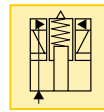
Warning!

Support force and clamping force must be matched. Support force should be at least 150% of clamping force.



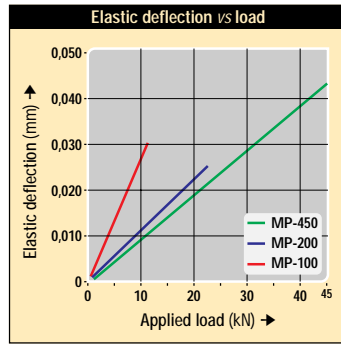
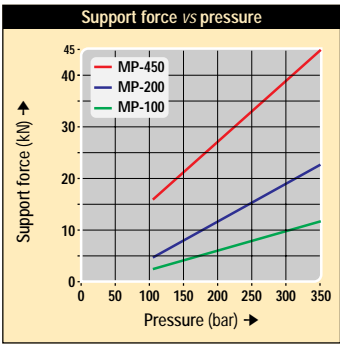
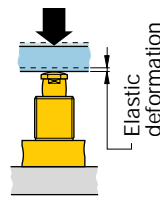
For proper application, clamp forces, pressures and timing consult Enerpac for support.

Always center load over work support.



Deflection chart:

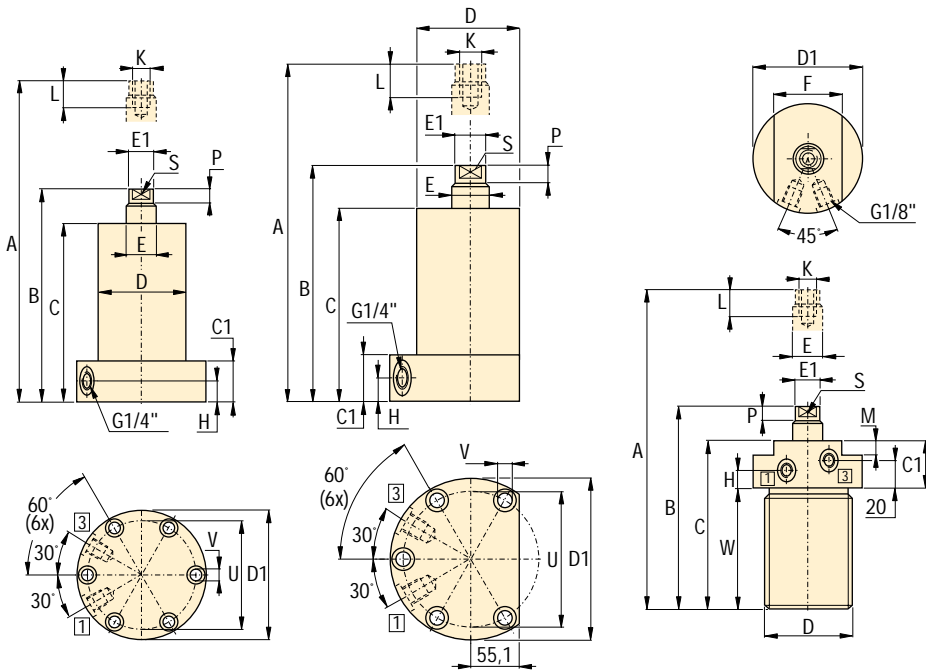
Elastic deformation of the work support resulting from the application of load.



MPFS-100, -200

MPFS-450

MPTS-100, -200



Product dimensions in mm

Model number	A	B	C	C1	D	D1	E	E1	F	H	K	L	M	P	S	U	V	W	kg	
Flange models																				
MPFS-100	126	116	106	25	76	110	15,7	14,0	-	12,4	M8x1,25	15	-	5	12	94	9	-	4,0	
MPFS-200	130	120	106	25	92	130	24,9	22,9	-	12,4	M12x1,75	20	-	5	19	112	9	-	6,0	
MPFS-450	193	173	161	25	130	165	50,0	48,0	-	12,4	M20x2	30	-	10	30	147	11	-	15,9	
Threaded models																				
MPTS-100	125	115	105	38,1	M60x2	74,7	15,7	14,0	55	15,7	M8x1,25	15	20	5	12	-	-	-	66,8	3,0
MPTS-200	129	119	105	38,1	M80x2	95,0	24,9	22,9	70	15,7	M12x1,75	20	20	7	19	-	-	-	66,8	4,0