

# Turbo II air-hydraulic pumps *Application & selection*

Shown: PAMG-5402PB, PACG-3102PB, PATG-3102PB, PATG-5105PB



▶ Turbo II air-hydraulic pumps generate the hydraulic pressure you need, using the air pressure you have available. The air saver piston reduces air consumption and operating costs.

They are ideal for providing the power and speed desired in simple clamping circuits. Turbo II air-hydraulic pumps are best suited to medium and lower cycle applications. At only 75 dBA, these new Turbo II series help to keep noise level to a minimum.

## 🌐 Select the required output

### 3000 series

- Hydraulic-air ratio 45:1 (350 bar hydraulic pressure at 8 bar air pressure)
- Hydraulic pressure range 85 - 350 bar (range of 35 - 85 bar available with diminished stall/restart performance)
- Maximum hydraulic oil flow 3,0 l/min

### 5000 series

- Hydraulic-air ratio 60:1 (350 bar hydraulic pressure at only 5,5 bar air pressure)
- Hydraulic pressure range 120 - 350 bar (range of 48 - 120 bar available with diminished stall/restart performance)
- Maximum hydraulic oil flow 2,0 l/min

## Quick and powerful hydraulic supply in an economical air-powered unit

- On-demand stall-restart operation maintains system pressure, providing clamp security
- External adjustable pressure relief valve (behind sight glass)
- Internal pressure relief valve provides overload protection
- Reduced noise level to 75 dBA reduces operator fatigue
- Operating air pressure: 1,7-8,6 bar – enables pump to start at low air pressure
- Reinforced heavy-duty lightweight reservoir for applications in tough environments
- 5 valve mounting options provide flexibility in setup and operation
- Composite air piston seal allows operation on completely dry air supply

## 🌐 Select the required operation

### PATG series

- Momentary (air-inlet) treadle for operation of single acting cylinders
- Provides advance, hold and retract functions

### PACG series

- Momentary or continuous air inlet treadle
- Remote valve is required to operate single-acting cylinders
- Pressure gauge included

### PASG series

- Momentary or continuous air inlet treadle
- Suitable for mounting any single or double acting valve with a CETOP 03 mounting configuration

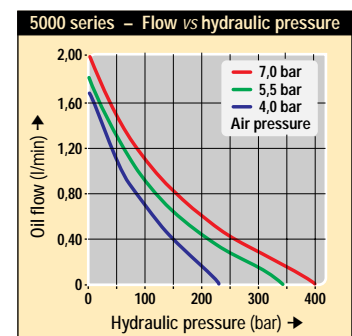
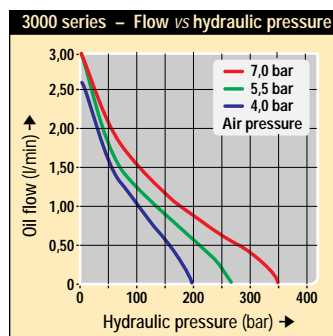
### PAMG series

- Momentary or continuous air inlet treadle
- Manual 4-way, 3-position, tandem center valve for single or double acting operation

### PARG series

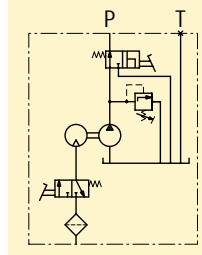
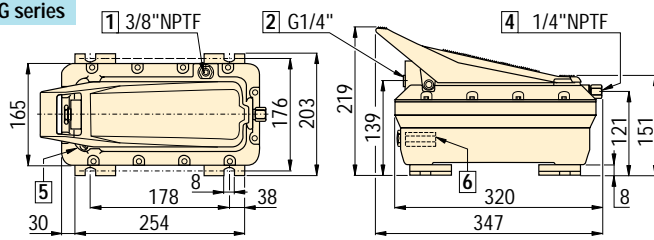
- Includes 4,5 m air pendant for remote control of single-acting cylinders
- Provides advance, hold and retract functions

## 🌐 Output Oil Flow



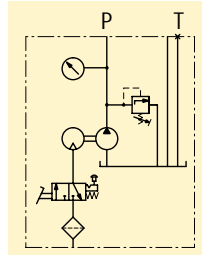
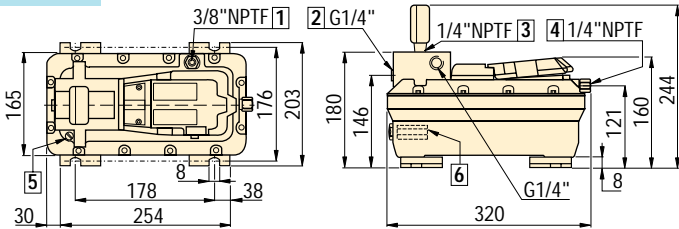


### PATG series

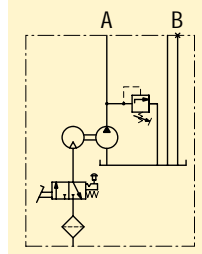
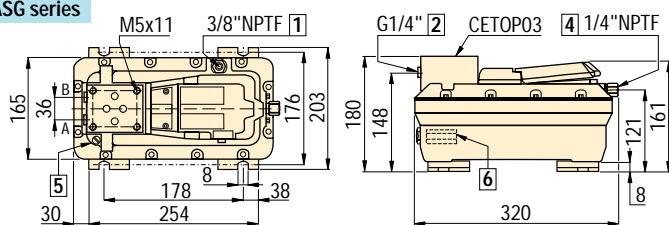


### PACG series

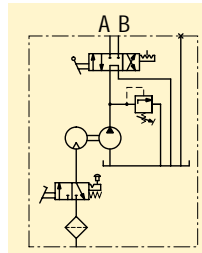
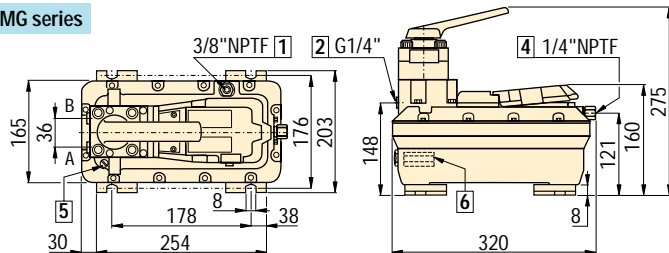
PACG series include pressure gauge G-2517L.



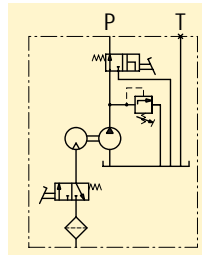
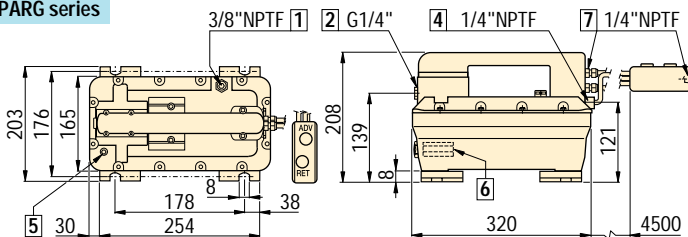
### PASG series



### PAMG series



### PARG series



- 1 Auxiliary vent/tank fill port
- 2 Hydraulic output
- 3 Gauge mounting port
- 4 Swivel air input with filter
- 5 Filtered permanent tank vent
- 6 Adjustable pressure relief valve
- 7 Air pendant air input

## Product Selection

Pump type	3000 series Model Number	Oil flow <sup>1)</sup> 3000 series l/min	5000 series Model Number	Oil flow <sup>1)</sup> 5000 series l/min	Max. hydraulic pressure bar	Reservoir size <sup>2)</sup> litres	Usable oil capacity <sup>2)</sup> litres		Air pressure range bar	Air consumption l/min	Weight kg
							hor. mount.	vert. mount.			
PATG	PATG-3102PB	3,0	PATG-5102PB	2,0	350	2,4	2,1	1,1	1,7-8,6	340	8,6
PACG	PACG-3002PB	3,0	PACG-5002PB	2,0	350	2,4	2,1	1,1	1,7-8,6	340	8,6
PASG	PASG-3002PB	3,0	PASG-5002PB	2,0	350	2,4	2,1	1,1	1,7-8,6	340	8,6
PAMG	PAMG-3402PB	3,0	PAMG-5402PB	2,0	350	2,4	2,1	1,1	1,7-8,6	340	11,3
PARG	PARG-3102PB	3,0	PARG-5102PB	2,0	350	2,4	2,1	1,1	1,7-8,6	340	10,5

<sup>1)</sup> At 0 bar hydraulic and 7 bar air pressure.

<sup>2)</sup> Turbo II air-hydraulic pumps are also available with 5 litres reservoir. To order replace 2 in model number with 5.

- Oil Flow: 2,0-3,0 l/min
- Pressure: 85 - 350 bar
- Air: 340 l/min
- Reservoir: 2,4 - 5,0 litres

- E Bombas hidroneumáticas
- F Pompes hydro-pneumatiques
- D Lufthydraulische pumpen

## Options

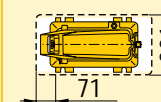
### Large reservoir models



Enerpac Turbo air-hydraulic pumps are also available with large reservoir.

### Usable oil capacity

Hor. mounted: 3,7 litres  
Vert. mounted: 2,9 litres



To order your Turbo II with a large reservoir, replace 2 in the model number with 5.

### Gauges and accessories

106 ▶



### Regulator-filter-lubricator

97 ▶



## Important

For high cycle applications electric pumps are recommended.