

▼ Shown: BPR-5075



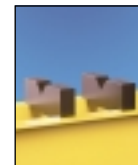
Expert Designed Versatility

- Quality welded frame for maximum strength and long life
- Frame rolls easily on 4 steel roller bearings
- Exclusive 'Hydra-Lift' bolster for effortless adjustment of the vertical daylight
- Roller head design is standard to allow lateral movement and locking of the cylinder up to 300 mm left or right of centre
- All models in the quick selection chart have been matched to an electric pump, double-acting cylinder, hose and gauge, offering the complete package
- Roll Frame design features a stationary bed with the ability to support heavy loads



Cylinder adjustment

Cylinder adjustment allows horizontal side to side cylinder positioning.



V-Blocks

These V-Blocks are designed for easy fixtureing of round stock and other non-uniform materials. Featuring precise fit into the press bolster.

Page: 134



Hydra-Lift

Allows easy, effortless daylight adjustment. Standard on all Roll-Frame presses.

Page: 134

Press Capacity ton (kN)	Vertical Daylight A (mm)		Maximum Bed Width E (mm)	Electric Hushh Pump		Press Model Number	Double-Acting Cylinder		Speed (mm/sec)		
	min.	max.		Model Number	Page		Stroke (mm)	Model Number	Page	Rapid Advance	Pressing
50 (498)	152	942	730	GPER-3420WN	74	BPR-5075	333	RR-5013	26	20,5	1,9
100 (933)	159	1048	889	GPER-3420WN	74	BPR-10075	333	RR-10013	26	10,9	1,0
200 (1995)	279	1295	1219	GPER-3420WN	74	BPR-20075	330	RR-20013	26	5,1	0,5

Roll Frame Presses

▼ An BPR-20075 Roll Frame Press is used to remove a large shaft from this pillow-block assembly. The Roll Frame design allows this heavy part to be safely loaded with an over-head crane.



BPR Series



Capacity:

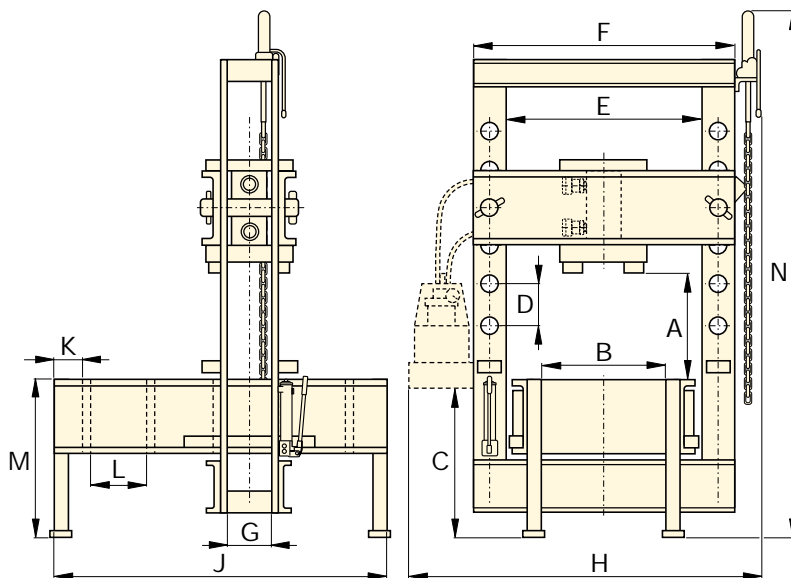
50-200 ton

Maximum Daylight x Width:

1295 x 1219 mm

Maximum Operating Pressure:

700 bar



Roll Frame Press Gauges

All press models include a gauge and gauge adaptor, matching the press capacity:

Press Capacity	Gauge Model Number	Adaptor Model Number
ton		
50	GF-50B	GA-2
100	GF-871B	GA-3
200	GF-200B	GA-3

For more information on gauges, please refer to the System Components section.

Page: 112

Roll Frame Press Dimensions (mm)													Press Model Number	
A (min.-max.)	B	C	D	E	F	G	H	J	K	L	M	N		(kg)
152-942	526	971	264	730	933	127	1420	1626	203	270	762	2870	917	BPR-5075
159-1048	673	965	222	889	1143	146	1605	1676	203	270	813	3021	1767	BPR-10075
279-1295	984	933	254	1219	1626	232	2150	2197	203	381	915	3200	4186	BPR-20075