



## Versatile modular electric pumps

The rugged modular design allows plug and play installation of valves and accessories. Now it's easier than ever to customize your pump.

# Electric Driven Pumps *The Kit Concept*

Shown: WEH-4020JHL, WMK-21



Hush2000\_WH

▶ Electric pumps designed for applications where higher flows are required and for high cycle life. Can be configured to work with electronic system controls and customized to support a variety of high performance applications.

## ▼ Single & two stage electric pumps

...customize them to your needs

- Easy to customize with modular standard kits to meet any requirement
- NEMA 4 rated, heavy duty steel controls enclosure includes:
  - Power on/off selector
  - Industrial grade high cycle motor starter and transformer
  - 24 VDC solenoid and remote pendant controls
  - Quick couple electrical connections for all accessory kits
- Easy to read integrated sight glass
- 40 micron filtered breather with splash guard
- Totally enclosed fan cooled motors are ideal for use in many environments
- User adjustable external relief valve
- 79 max. dBA for quiet in-plant applications
- Multiple voltage options for a wide variety of applications

## Customize to your needs

...fits any clamping application

- New innovative modular design for demanding workholding applications
- Easy to customize with a variety of modular standard kits to meet any requirement
- Multiple voltage options
- Standard oversized filtered breather for easy reservoir fills without the need of special tools
- Large capacity (2.5, 5 and 10 gallon) reservoir minimizes heat build up, while reducing maintenance
- Easy to read integrated reservoir sight gauge.

## Manifold and accessory kits to optimize your pump:



### Manifold Kits

5 ▶

- Necessary to mount valves, pressure switch, filter kit, heat exchanger and gauges to basic pump unit
- In single, two and four valve stations horizontal or up to 8 VP valve stations vertical
- With DO3, CETOP03, Enerpac VP, or porting block for remote valves.



### Return Line Filter Kit

10 ▶

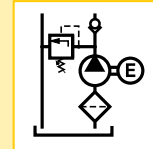
- Extends life of pump and other hydraulic components, reduces damage created by oil borne contaminants
- Internal pressure by-pass
- Provides 25 micron nominal filtration
- Maintenance indicator included
- Can be easily mounted to the pump
- Variety of assembly hardware included





Flow:	120-640 in <sup>3</sup> /min
Pressure:	5000 psi max
Motor:	1.5 hp
Reservoir:	2.5 - 10 gal

- (E)** Bombas eléctricas
- (F)** Centrale hydraulique
- (D)** Modulare Spannumpme



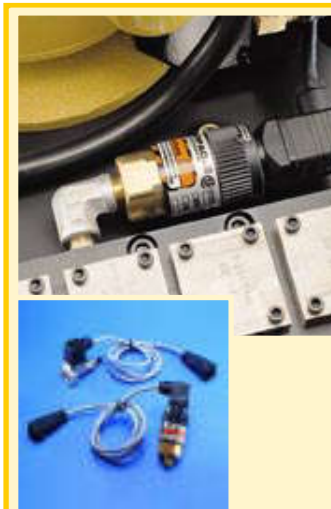
**Heat Exchanger Kits** 10 ▶

- Recommended for applications in which the pump is running in high ambient temperature or high duty cycles
- Increases oil life and consequently that of the pump and other hydraulic components
- Available in 24VDC or 115VAC



**Float/Temperature Switch Kit** 12 ▶

- Senses both oil level and temperature
- Float switch shuts down pump before the oil reaches an unsafe level
- Temperature switch shuts down pump when the oil has reached an unsafe operating temperature; protecting the pump and components from overheating



**Pressure Switch Kits** 11 ▶

- Signals when the hydraulic circuit has reached the desired pressure
- Automates the clamp or unclamp cycle
- Monitors system pressure, and can be tied to external controls



**Options** \_\_\_\_\_

**Valves** 6-9 ▶

**GW-2510 Pressure Gauge 10,000 psi**

Includes: G2535L 2 1/2" Gauge  
 FZ1608 1/4" Hex Nipple  
 FZ1638 1/4" Elbow

**Important** \_\_\_\_\_

Oil should be replaced every 500 working hours to ensure long life. Change filters when changing oil or 4 times a year, whichever comes first.

Output flow rate should be matched to hydraulic components used in the system.

Shown: WEH-4020JHL-WMK21



## WE series

Enerpac single and two stage electric workholding pumps are designed to be customized for your application.

### Application

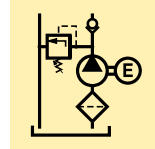
Enerpac electric pump used in conjunction with swing cylinders, work supports, directional valves, control valves and sequence valves can provide a complete clamping solution. The optional heat exchanger and filter kit provide additional life. The pressure switch allows the unit to be fully automated.

## When reliability is essential

- New innovative modular design for demanding workholding applications
- Easy to customize with standard kits to meet any requirement
- Integrated oil sight gauge
- Electrical junction box includes plug-in connections
- Integrated adjustable relief valve allows user to set the maximum system pressure
- Oversized filtered breather for easy reservoir fills without the need of tools
- System relief included in pump

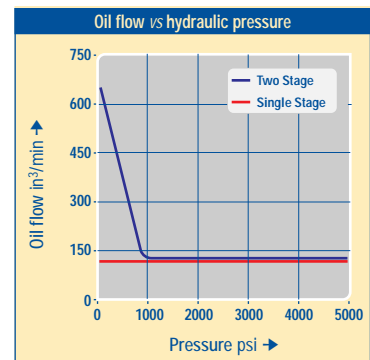
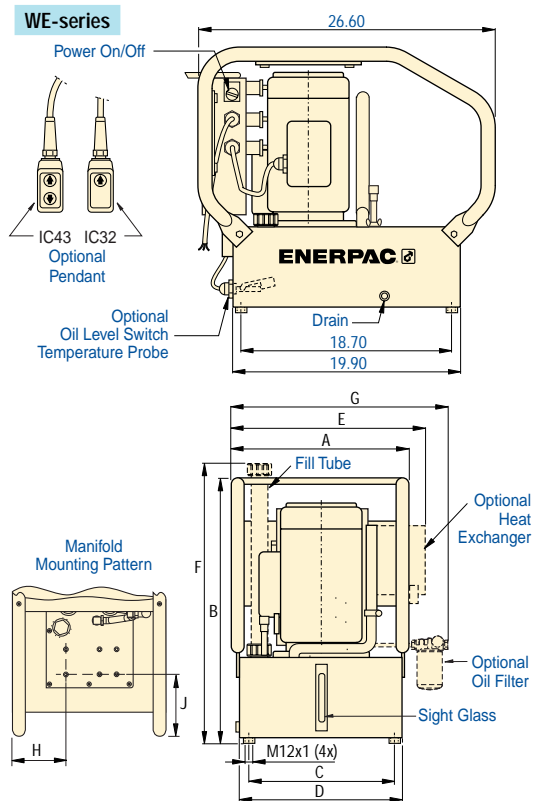
Flow:	120-640 in <sup>3</sup> /min
Pressure:	5000 psi max
Motor:	1.5 hp
Reservoir:	2.5 - 10 gal

- (E) Bombas eléctricas
- (F) Centrale hydraulique
- (D) Hydraulische Pumpe



## Options

VP-series Modular valves	
Manifold kits	
Accessory kits	



## Product selection

Output Flow Rate		Pressure Rating		Model number	Motor Size	Relief Valve Adjustment Range	Sound Level
1 <sup>st</sup> stage	2 <sup>nd</sup> stage	1 <sup>st</sup> stage	2 <sup>nd</sup> stage				
640	120	800	5,000	WE SERIES	1.5 (hp)	800-5,000 max. psi	79 dBA

## Product dimensions in inches [ ]

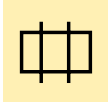
Usable Oil Capacity (gal)	Motor Size (hp)	Model number**	Pump Dimensions (in)										(lbs)
			A	B	C	D	E	F	G	H	J		
2.5	1.5	WE-XXX10X	10.11	21.68	6.50	8.75	14.61	24.43	14.11	2.70	6.09	175*	
5	1.5	WE-XXX20X	15.10	22.68	12.25	13.75	17.10	25.43	19.10	5.20	6.09	199*	
10	1.5	WE-XXX40X	15.10	27.68	12.25	13.75	17.10	30.43	19.10	5.20	6.09	263*	

Pressure: 5000 psi

Stations: 1-4 valves horizontal

Stations: 1-8 valves vertical

- E** Colectores
- F** Manifolds
- D** Manifolds



## For quick and easy installation ...integrated workholding system

- Manifolds allow the use of accessories such as heat exchangers, filter kits, pressure switches and gauges
- Multiple valve options
- With DO3 and Enerpac VP series and standard valve mounting patterns
- All installation components included
- Manifold not required when mounting Enerpac VM series manual valves

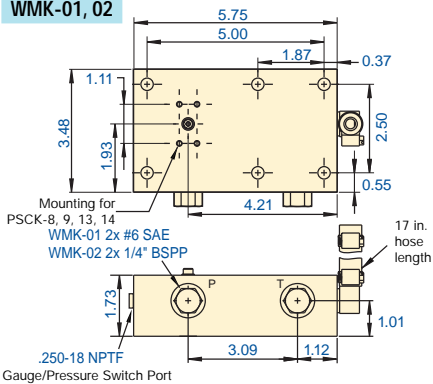
### Options

VP-series, modular valves

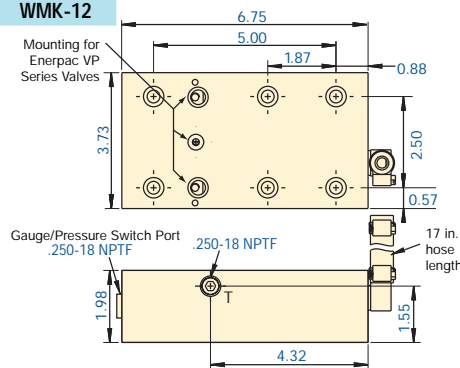
6 ▶



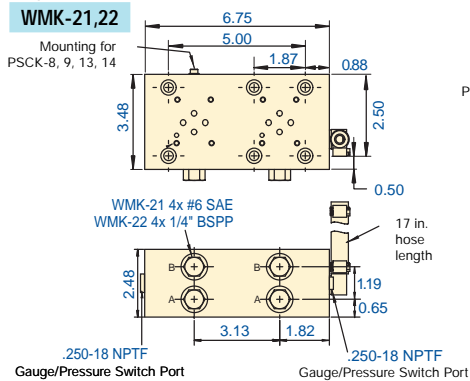
WMK-01, 02



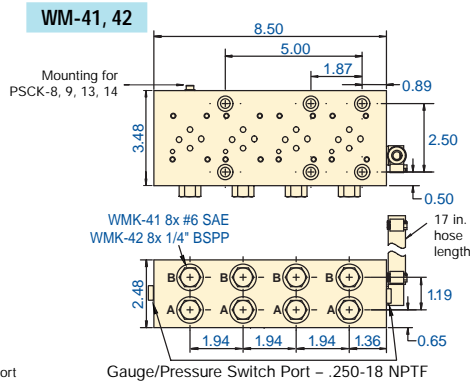
WMK-12



WMK-21, 22



WM-41, 42



Shown: WMK-21, WMK-12, WMK-01



### WMK series

Manifolds are necessary to mount directional control valves. Enerpac WMK manifolds are designed for use in conjunction with WE series workholding pumps, allowing installation of multiple directional control valves.



WMK-01 and -02 allow for plumbing to remote mounted valves.



WMK-12 allows VP Series valves to be mounted directly to the pump.



WMK-21, -22, -41 and -42 allow mounting of DO3 or CETOP03 valves directly to the pump.

■ Enerpac WMK-41 manifold used in Enerpac WE-series pump. Unused manifold stations are sealed with cover plates.

### Product selection

Valve mounting pattern	Model number	Max Number Valves	Coverplate * Model number	lbs
Remote Valve, SAE porting block	WMK-01	-	-	8.0
Remote Valve, BSPP porting block	WMK-02	-	-	13.0
Enerpac VP Series	WMK-12	1-8	-	14.0
DO3 and VSS/VST Series	WMK-21	2	MC-1	14.0
CETOP03 and VSS/VST Series	WMK-22	2	MC-1	14.0
DO3 and VSS/VST Series	WMK-41	4	MC-1	22.00
CETOP03 and VSS/VST Series	WMK-42	4	MC-1	22.00

\* Manifold Cover Plate must be ordered separately. Includes gasket and mounting bolts.



Shown: VP-12

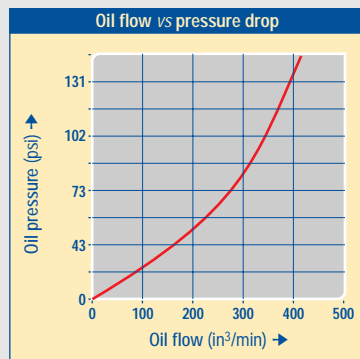


## VP-series

Solenoid directional valves control the direction of the oil flow to each cylinder port.

### Application

With the use of WMK-12 manifold these valves allow quick and easy assembly of hydraulic control valves on your Enerpac WE-series pump. For remote mounting of these valves use WM-10 manifold.



■ Enerpac VP-series valves on WMK-12 manifold.



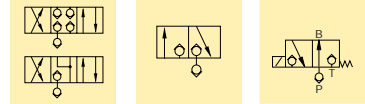
## Solenoid directional valves

- Dual poppet valve design for zero internal leakage
- Inlet check-valve standard
- High cycle switching
- Stackable to 8 valve stations high
- 250-5000 psi operational pressure
- Oil flow capacity 427 in<sup>3</sup>/min @ 5000 psi
- Oil flow capacity 915 in<sup>3</sup>/min @ 0 psi
- G<sup>1</sup>/<sub>4</sub>" oil connections and integrated filtration
- Multiple voltage options

Pressure: 5000 psi

Max. Flow: 915 in<sup>3</sup>/min

- (E) Válvulas de control
- (F) Electro distributeurs
- (D) Wegesitzventile



## Options

WMK-series Manifolds

5 ▶



Tie Rod Kits

8 ▶



## Important

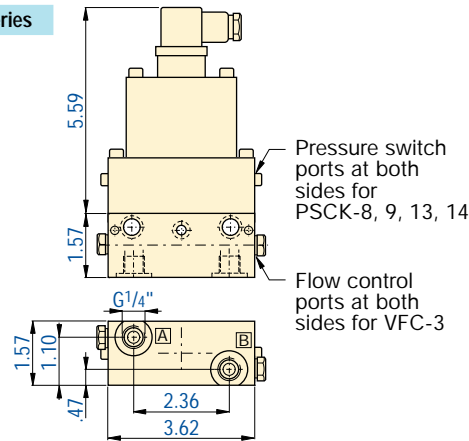
### Valving help

See Basic System Set-up and Valve information in our E211 "Yellow Pages" for hydraulic symbols of VP-series valves.



E211 ▶

VP series



Pressure switch ports at both sides for PSCK-8, 9, 13, 14

Flow control ports at both sides for VFC-3

## Product selection

Voltage @ current	Model number	Flow path	Used with cylinder(s)
at 50/60 Hz			
<b>▼ 4/3 Closed centre</b>			
24 VDC @ 1.13 A	VP-11		1x Dbl-act. / 2x Sgl-act.
110 VAC @ 500 mA	VP-12		1x Dbl-act. / 2x Sgl-act.
230 VAC @ 250 mA	VP-13		1x Dbl-act. / 2x Sgl-act.
<b>▼ 4/3 Float centre</b>			
24 VDC @ 1.13 A	VP-21		1x Dbl-act. / 2x Sgl-act.
110 VAC @ 500 mA	VP-22		1x Dbl-act. / 2x Sgl-act.
230 VAC @ 250 mA	VP-23		1x Dbl-act. / 2x Sgl-act.
<b>▼ 3/2 Normally closed</b>			
24 VDC @ 1.13 A	VP-31		1x Dbl-act. / 2x Sgl-act.
110 VAC @ 500 mA	VP-32		1x Dbl-act. / 2x Sgl-act.
230 VAC @ 250 mA	VP-33		1x Dbl-act. / 2x Sgl-act.
<b>▼ 3/2 Normally open</b>			
24 VDC @ 1.13 A	VP-41		1x Dbl-act. / 2x Sgl-act.
110 VAC @ 500 mA	VP-42		1x Dbl-act. / 2x Sgl-act.
230 VAC @ 250 mA	VP-43		1x Dbl-act. / 2x Sgl-act.
<b>▼ 3/2 1 port normally closed, 1 port normally open</b>			
24 VDC @ 1.13 A	VP-51		1x Dbl-act. / 2x Sgl-act.
110 VAC @ 500 mA	VP-52		1x Dbl-act. / 2x Sgl-act.
230 VAC @ 250 mA	VP-53		1x Dbl-act. / 2x Sgl-act.

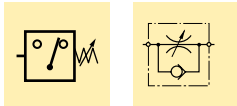
Note: DIN 43650 electrical connector included. Valve weight 6.5 lbs.

Pressure: 5000 psi

Flow: 915 in<sup>3</sup>/min @ 0 psi

Voltage: 115/230 VAC, 24 VDC

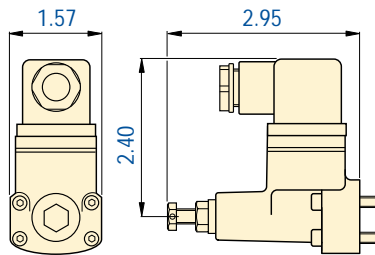
- E** Presostatos
- F** Pressostats
- D** Druckschalter



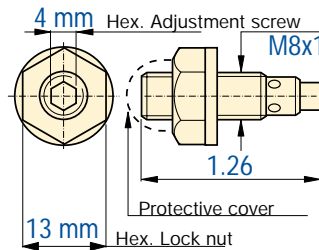
## To control your hydraulic system

- Mounts directly into VP-series modular valves
- In-line installation
- Cartridge flow control valve and pressure switches can be manifold mounted for remote use
- Lockable adjustment screw on PSCK models
- PB-2 Adapter block available for remotely mounting PSCK switches

PSCK-8, 9



VFC-3



## Options

**PB-1 Auxiliary block**

8 ▶

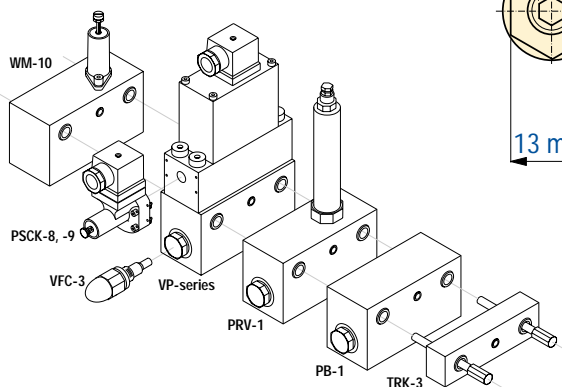


**PB-2 Adapter block**

11 ▶



## Valve Stack Example



## Product selection

Solenoid voltage @ current at 50/60 Hz	Model number	Hydraulic scheme	Pressure range psi	Deadband psi	Maximum oil flow in <sup>3</sup> /min
▼ Pressure switch					
24 VDC @ 2 A	PSCK-8		1450 - 5000	261 - 501	915
115 VAC @ 2 A					
230 VAC @ 2 A					
▼ Pressure switch					
24 VDC @ 2 A	PSCK-9		290 - 3045	87 - 218	915
115 VAC @ 2 A					
230 VAC @ 2 A					
▼ Flow control valve					
Screw-in throttle valve	VFC-3		0-5000	-	915

Shown: PSCK-8, VFC-3



Power Sources

## PSCK-8, 9

Adjustable pressure switches will open or close electrical contacts when the desired pressure value is reached.

## Application

To open or close an electric circuit when a preset pressure value is reached. The electrical circuit is used to control further working cycles, such as actuating control valves or to terminate a working cycle.

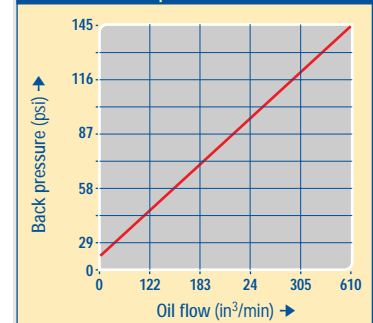
## VFC-3

Screw-in throttle type valve to control the amount of oil flow to the hydraulic cylinder.

## Application

Used to control cylinder speed in hydraulic circuits. Directly mounted into Enerpac VP-series valves or custom made manifolds for remote applications.

VFC-3 Back pressure vs flow return



# Tie Rod Kits, Porting Manifolds, Valves TRK, PB, PRV-series

Shown: WM-10, TRK-4, PB-1



## TRK-series

Tie Rod Kits mount Enerpac VP-series modular valves to the WMK-12 or WM-10 manifold and can accommodate one to eight VP-valve stations.

## PB-1

Porting manifold provides three pressure ports for auxiliary lines or accessories, such as a pressure gauge. Mounts between VP-series modular valve stations using TRK-series tie rod kits.

## PRV series

These valves regulate system pressure for all subsequent valves, according to the adjusted pressure. They maintain a constant pressure in a secondary circuit, and include a check valve that prevents pressure drop on the secondary side.

■ Tie rods mount VP-series valves and accessories to manifold, providing leak-free sealing.



## Simplifies valve and accessory mounting

### TRK-series

- Connects 1 to 8 VP-series valves stations
- Provide leak-free sealing valves

### PB-1

- Provide 3 auxiliary pressure lines
- G1/4" oil connection

### PRV-1

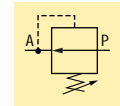
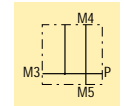
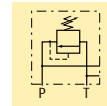
- For use directly with VP series modular valves
- Stackable for multiple pressures on one valve stack assembly
- Tool adjustable knob can be locked
- Precise control of pressure

Mounting: 1-8 VP valve stations

Pressure: 5000 psi max.

Flow: 915 in<sup>3</sup>/min @ 0 psi

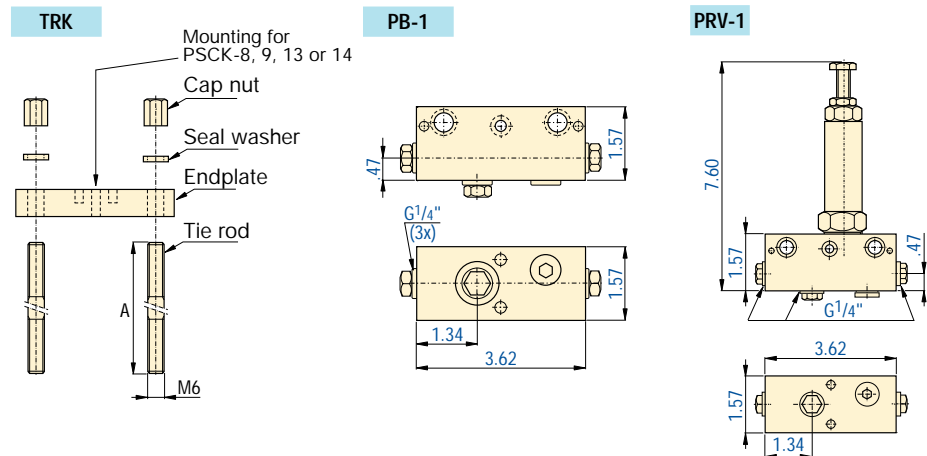
- (E) Pernos de montaje de válv.
- (F) Vis de montaje de distrib.
- (D) Zugstangen



## Options

VP-series directional valves

6 ▶



## Product selection

Quantity of stackable VP-series directional valves	Model number	Tie rod length	Mounting thread
		inch	mm

### ▼ Tie rod kits

1	TRK-1	3.45	M6
2	TRK-2	4.92	M6
3	TRK-3	6.50	M6
4	TRK-4	8.07	M6
5	TRK-5	9.65	M6
6	TRK-6	11.22	M6
7	TRK-7	12.80	M6
8	TRK-8	14.37	M6

## Product selection

Oil ports	Model number	Hydr. symbol	Maximum pressure
BSPP			psi

### ▼ Porting manifold (P port connection)

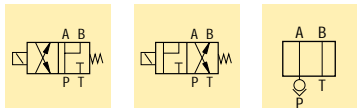
3x G1/4"	PB-1		5000
----------	------	--	------

## Product selection

Mounting style	Adjustable pressure range	Maximum pressure	Built-in adjustable pressure relief valve	Model number	Maximum oil flow	
	psi	psi	psi		in <sup>3</sup> /min	lbs
VP-series	435 - 4350	5000	-	PRV-1	915	3.5

Pressure:	0-5000 psi
Flow:	690 in <sup>3</sup> /min max.
Voltage:	115 VAC, 24 VDC

- (E)** Electroválvulas
- (F)** Electro distributeurs
- (D)** Elektromagnetische Ventile



## Zero leakage poppet valves increase efficiency

- Poppet valve design for zero leakage
- 4-way, 2-position float offset or normally open
- DO3 and CETOP03 mounting pattern
- DIN-standard rectifier plugs for easy connection to power source
- Including O-rings and mounting bolts
- Inline check valve provides positive load holding

## Options

WMK-series Manifolds

5 ▶



## Important

For multiple circuit applications, where some valves are de-energized while others stay energized, the PA-952661 inline check valve is recommended to prevent pressure drop on the holding circuit.

For an example 13 ▶

All VSS and VST valves are supplied with mounting bolts for either DO3 or CETOP03 manifolds

## Product selection

Valve flow path	Solenoid Voltage @ Current	Model number	Hydr. symbol	Pressure range	Pressure drop <sup>1)</sup>	Max. oil flow
	at 50/60 Hz			psi	psi	in <sup>3</sup> /min
<b>▼ Solenoid poppet valves – Normally open</b>						
4-way, 2 position	24VDC @ .60 A	VSS-1410D		0-5000	180	690
4-way, 2 position	115VAC @ .40 A	VSS-2210D		0-5000	180	690
<b>▼ Solenoid poppet valves – Normally closed</b>						
4-way, 2 position	24VDC @ .60 A	VST-1410D		0-5000	180	690
4-way, 2 position	115VAC @ .40 A	VST-2210D		0-5000	180	690
<b>▼ Inline check valve <sup>2)</sup></b>						
-	-	PA-952661		0-5000	0	690

<sup>1)</sup> Pressure drop from P-A or P-B at maximum oil flow of 690 in<sup>3</sup>/min.

<sup>2)</sup> Use of inline check valve PA-952661 with VSS or VST-series valves require use of 3.25 inch long #10-24UN Socket Head Cap Screw mounting bolts in place of standard bolts. Order #F107028-1 Bolt Kit.

Shown: VST-1401D, VSS-2210D



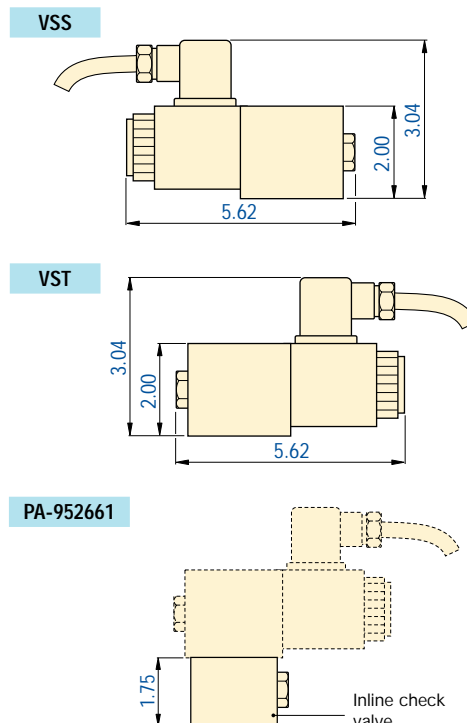
Power Sources

## VSS, VST-series

Solenoid directional control valves. Poppet design for zero leakage promote system efficiency. Increases the life of your workholding pump by decreasing internal valve leakage.

## Application

Advance and retract for single- and double-acting cylinders. The valves require check valves for positive load holding and can be installed for the same independent operation with single-acting cylinders by blocking the B port.



■ VSS-1410D mounted directly on WE series electric pump for use on positive clamping fixture.

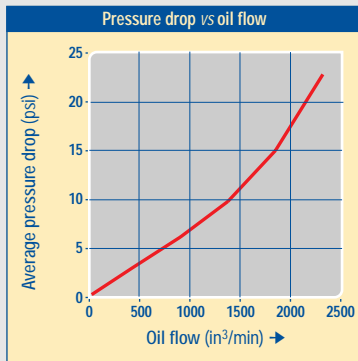


Shown: PFK-25



## PFK-series

The oil filter kit removes contaminants from the return oil flow before allowing it back into the reservoir, reducing component damage.



Shown: HE-1



## HE-series

Heat exchanger removes heat from the return oil to provide cooler operation.

## Extends life of hydraulic components

...increases system reliability

- 25 micron nominal filter cleans oil to increase system life
- Internal bypass valve to prevent damage if the filter is dirty
- All installation components included
- Kit assembles quickly and easily to Enerpac pump and manifold
- Maintenance indicator included

Filtration: 25 micron

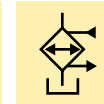
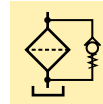
Pressure: max. 200 psi

Max. flow: 7.0 GPM

(E) Filtro

(F) Filtre

(D) Filter



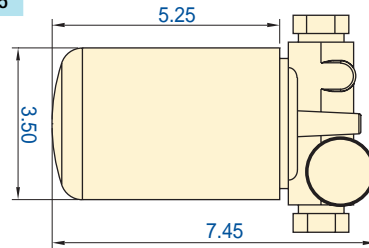
## Options

PF-25 Replacement filter element



For best performance, replace filter element on regular basis. Change filters when changing oil or 4 times a year whichever comes first.

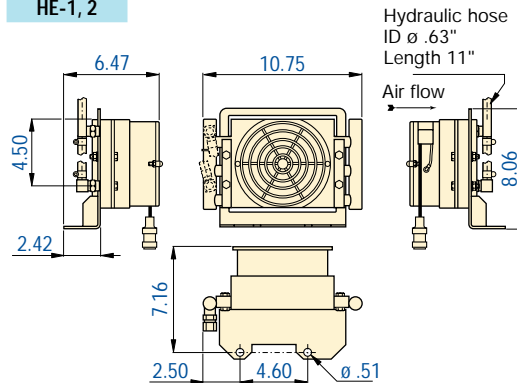
PFK-25



## Product selection

Nominal filtration	Model number	Maximum pressure	Maximum oil flow	Bypass pressure setting	Filter gauge/ service indicator	
micron		psi	GPM	psi		lbs
25	PFK-25	200	7.0	25	✓	2.4

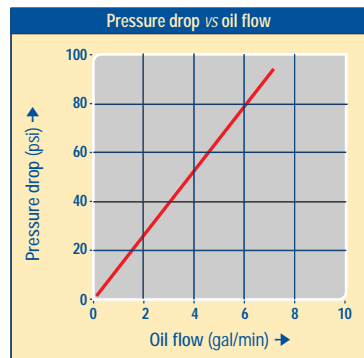
HE-1, 2



Transfer: 900 Btu/h

Pressure: max. 300 psi

Voltage: 115V, 24V



## Product selection

Voltage	Model number	Thermal transfer *	Amperage draw	Maximum pressure	Maximum oil flow	
		Btu/h kJoule	A	psi	GPM	lbs
24VDC	HE-1	900 950	.66	300	7.0	6.3
115VAC	HE-2**	900 950	.26	300	7.0	6.3

\*At 0.5 G/min and ambient temperature of 70°F.

\*\*HE-2 Requires Separate 115V Power Supply

# Pressure Switch Kits

# IC, PSCK series

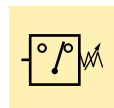
Temp.: 40-165 °F

Pressure: 290-10,000 psi

Accuracy: ±2%

Voltage: 24/115/230 V

- (E) Presostatos
- (F) Pressostats
- (D) Druckschalter



## Controls your pump, monitors your system

- Integrated kit mounts easily to your hydraulic system
- All installation components included
- Accuracy of ± 2% of full scale
- High duty cycle
- IC-7234 Switch included on factory-built pumps with "P" option
- PSCK Series switches only available as separately ordered kits.

## Options

GW-2510 Pressure Gauge, 10,000 psi



## Important

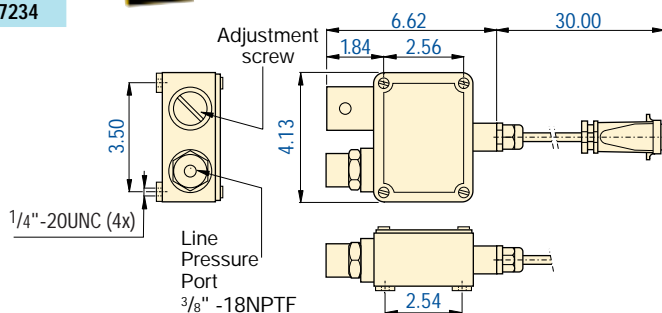
Pressure switch and electrical harness are specifically designed to work in conjunction with WE pumps and WMK manifolds.

For other uses, please reference individual pressure switches.



E211 ▶

## IC-7234



## Product selection

Adjustable pressure range	Electrical specification	Model number	Amperage Rating	Dead-band	Switchpoint repeatability	Temperature range	
psi	at 50/60Hz		A	psi	% of range	°F	lbs
▼ Mechanical adjustment							
700-10,000	24 VDC	IC-7234	5.0 A	115-550	± 2 %	40 – 165	1.0
500-3500	24/115/230 V	PSCK-11	5.0 A	90-400	± 2 %	40 – 165	1.0
3000-5000	24/115/230 V	PSCK-12	5.0 A	250-800	± 2 %	40 – 165	1.0
1450-5000	24/115/230 V	PSCK-13	2.0 A	260-500	± 2 %	40 – 165	1.0
290-3045	24/115/230 V	PSCK-14	2.0 A	90-220	± 2 %	40 – 165	1.0

Note: Electrical harness included with kit.

Shown: PSCK-14, PSCK-12



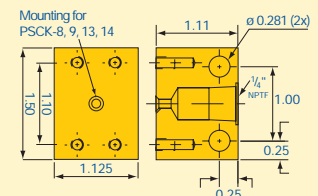
## PSCK series

Pressure switches monitor the hydraulic system to determine any change of pressure. The signal can then be used to control the pump, or other peripheral devices.

## Application

These pressure switches are designed for use in high cycle applications, machine tool interface, robotics and flexible machine systems. These switches can be used to automate the clamp and unclamp cycle.

## PB-2 Adaptor Block



All kits will turn off electric motor on WE series electric pumps when system pressure reaches preset level.

■ Pressure switch kit PSCK-2 installed on the WE-series workholding pump.



Shown: LS-1



### LS-series

Oil level indicator for pump reservoir. If the pump is mounted in a remote area that does not provide visual access to the external oil level sight, the float switch will turn off the pump before internal damage can occur due to cavitation.

Built-in thermal switch shuts motor off before pump damage can occur when oil temperature exceeds 175°F.

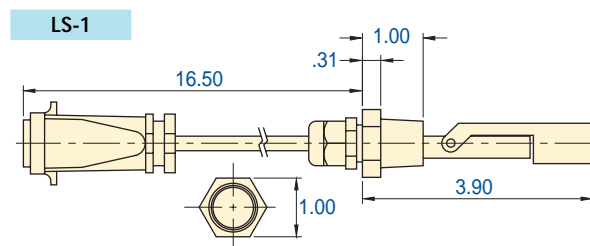
## Electronic float switch for feedback on pump oil level

- Drop-in design allows for easy installation to pump reservoir
- Electrical connector included
- Built-in thermal sensing provides feedback on oil temperature
- Senses low oil level in pump reservoir
- Universal voltage at 50/60 Hz


Temp. Set Point: 175 °F

Voltage: 120-240 VAC

- (E) Indicador del nivel/temp.
- (F) Interrupteur de niveau/temp.
- (D) Ölstand/Temperaturschalter



### Product selection

Fixed temperature signal	Model number	Voltage	Thermostat rating setting	Maximum pressure	
°F			Amps	psi	lbs
175	LS-1	24VAC/DC	2.6	150	.75

Shown: IC-32, IC-43



Pendant controls are used on single-circuit systems as a simple and affordable way to control electric valves.


## Control Pendants

- Provides safe and accurate control of solenoid valves
- Enclosure NEMA 4 rated for indoor or outdoor applications
- Molded from high strength engineered resins
- Industrial strength strain relief protects cord from abuse
- Two button unit controls two solenoid valves
- Single button controls one solenoid valve or dump valve
- UL, CSA and CE approved

Voltage: 24 VDC

Cord Length: 10 ft.

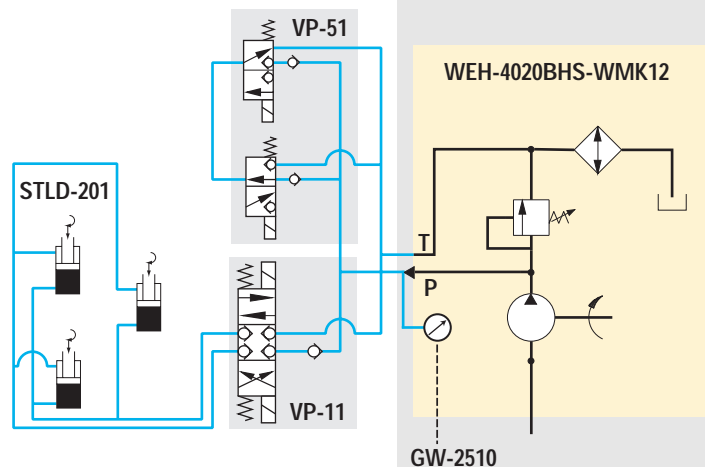
### Product selection

Used with Cylinders	Model number	Number of Switches	
			lbs
1 x Single Acting	IC-32	1	2.5
1 x Double Acting/2 x Single Acting	IC-43	2	2.5

# Hydraulic System Circuits

## Single circuit hydraulic system

- WEH-4020BHS-WMK12: Basic pump unit
- VP-11 controls the STLD-201 swing clamps
- VP-51 acts as an unloading valve:
  - Energized: Flow and pressure are sent to the fixture
  - De-energized: Oil is allowed to flow back into the tank to reduce stress and prolong the life of the pump.



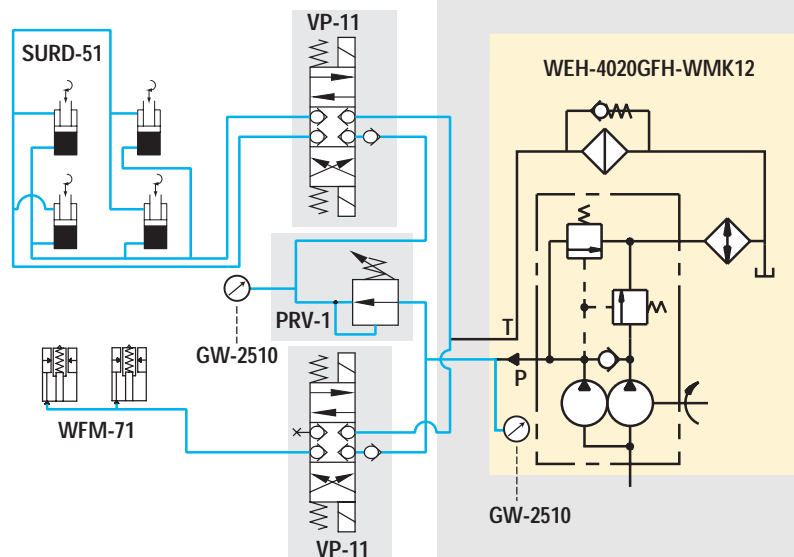
System component	Quantity	Model number	Page number
Pump Unit Single-Stage	1	WEH 4010BS WMK-12	4
Modular directional valves	1	VP-11	6
Modular directional valves	1	VP-51	6
Tie Rod Kit	1	TRK-2	8
Pressure Gauge	1	GW-2510	3

### ⚠ Important

Use of an unloading valve is required in high cycle applications. Failure to unload the pump when pressure is not needed will cause damage or premature failure of your power unit.

## Double circuit hydraulic system

- WEH-4020GFH-WMK12: Pump unit with filter and heat exchanger to prolong life
- Mounted on WMK-12 manifold:
  - Two VP-11 control valves to allow individual control of the WFM-71 work supports and SURD-51 swing clamps
  - One PRV-1 to allow full pressure to the work support and reduced pressure to the swing clamps



System component	Quantity	Model number	Page number
Pump Unit Two-Stage	1	WEH-4020GFH WMK12	4
Modular valve	2	VP-11	6
Pressure Reducing Valve	1	PRV-1	8
Tie Rod Kit	1	TRK-3	8
Pressure Gauge	2	GW-2510	3
*Adapter Fitting	1	FZ-2023	-

\*Used to connect GW-2510 to PRV-1

### ⚠ Important

When using multiple valves to control independent circuits, be sure to incorporate a pressure port check valve on each valve. Without this check valve, your system may not perform as designed. Enerpac VP Series valves have this feature built in for your convenience.

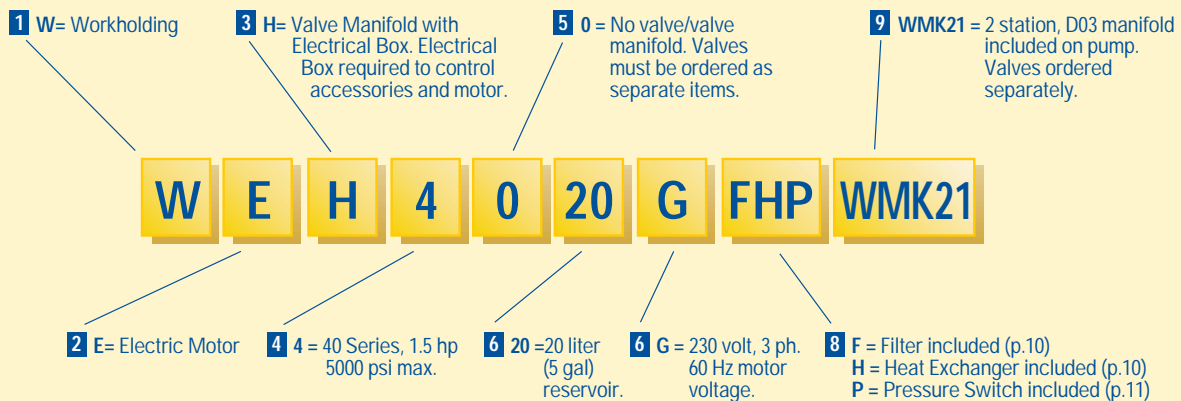


# Customizing Your Pump

## Building your customized Hushh model number

Enerpac's wide variety of options and accessories allows you to build a custom power unit to your specific needs. Power units can be configured with just the essentials, or fully configured to be used in the most demanding applications. And, you don't need to order all of the options today. If you decide you want to upgrade or change in the future, simply order the accessory kits at that time. Use the sample model numbers below and the chart on page 15 to help you configure your custom Hushh power unit. Be sure to reference back to the specific accessory product pages if you need more information.

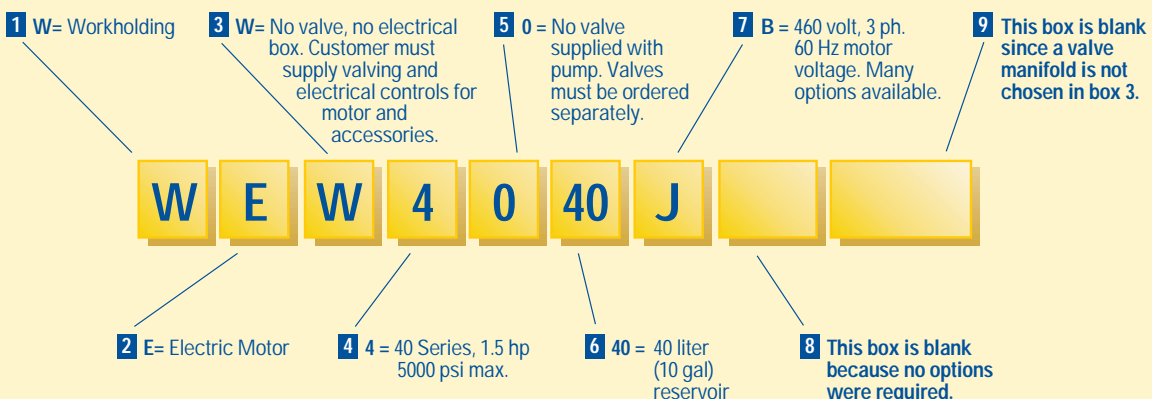
### Example 1



### Example 2



### Example 3





## Custom build your Pump

▼ This is how a WE series Model Number is built:



1	2	3	4	5	6	7	8	9
Product Type	Motor Type	Pump Type	Pump Series	Valve Type	Res. Capacity	Motor Voltage	Options	Manifold Options

### 1 Product Type

W = Workholding Pump

### 2 Motor Type

E = Electric

### 3 Pump Type \*3

D = Dump (Valve Type 1 only)

H = Valve manifold with electrical box (Valve Type 0 only)

K = Valve manifold without electrical box (Valve Type 0 only) \*6

N = No valve with electrical box (Valve Type 0 only)

W = No valve without electrical box (Valve Type 0 only) \*6

### 4 Pump Series

4 = 1.5 HP 5000 psi, 120 in<sup>3</sup>/min

### 5 Valve Type

0 = No valve/coverplate or manifold

1 = Dump

### 6 Reservoir Capacity

10 = 10 Liters (2.5 gal)

20 = 20 Liters (5 gal)

40 = 40 Liters (10 gal)

### 7 Motor Voltage

A = 115V, 1ph, 50Hz

B = 115V, 1ph, 60Hz

E = 230V, 1ph, 50Hz

G = 230V, 3ph, 60Hz

I = 230V, 1ph, 60Hz

J = 460V, 3ph, 60Hz

K = 460V, 3ph, 50Hz

M = 200V, 3ph, 50/60Hz

R = 575V, 3ph, 60Hz

T = 230V, 3ph, 50Hz

W = 380V, 3ph, 50Hz

For Canada only:

Y = 115V, 1ph, 50Hz

### 8 Options \*4 (Leave blank if not required)

F = Filter Kit

H = Heat exchanger \*1

L = Level/Temperature Switch

N = No Roll Bars \*2

P = Pressure Switch

S = Single Stage

### 9 Manifold Options \*5 (Pump types H and K only. Otherwise, leave blank.)

WMK-01 = SAE porting block for remote valves

WMK-02 = BSPP porting block for remote valves

WMK-12 = 1-8 station VP series mounting

WMK-21 = 2 station D03 mounting

WMK-22 = 2 station CETOP03 mounting

WMK-41 = 4 station D03 mounting

WMK-42 = 4 station CETOP03 mounting

\*1 Requires 115VAC Source for Heat Exchanger on models without electrical box.

\*2 Unless specified, all standard pumps are supplied with Roll Bars.

\*3 Single circuit, intermittent duty, manual and electric valves are available factory installed. Consult Enerpac for options.

\*4 Options should be added to model number in alphabetical order.

\*5 Units with valve manifolds do not include valves. See valve section for available options to be ordered separately.

\*6 Units without electrical box require customer supplied motor starter and electrical controls for pressure switch, heat exchanger and level switch.

## Example \_\_\_\_\_

The WED-4110BHL is a 1.5 HP, 5,000 psi, 2-stage pump with a dump valve, a 10 liter reservoir, a 115V, 1-phase, 60 Hz motor, a heat exchanger and a level/temperature switch.

LK-1  
Leveling Feet  
CK-1  
Casters

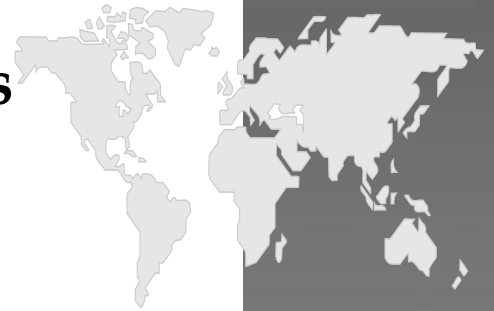


SK-1  
Skid Bars



Previous Model #	Current Model #
WEN-15020BR	WEN-4020BS
WEN-15020GR	WEN-4020GS
WEN-40020BR	WEN-4020B
WEN-40020GR	WEN-4020G

# Workholding Power Solutions



## The full Enerpac Workholding line

### Cylinders

- Swing Cylinders
- Work Supports
- Collet-Lok™
- Pull Cylinders
- Threaded Body
- Manifold Mount
- Block
- Pull Down
- Hollow Plunger

### Pumps

- Manual
- Electric driven
- Compressed air driven

### Valves and accessories

- Manual Directional Valves
- Solenoid Directional Valves
- Pressure control Valves
- Flow control Valves
- Hoses and couplers
- Gauges
- Fittings
- Manifolds



See the latest Enerpac Industrial Tools catalog for information about other Enerpac high-force tools.



See the Enerpac E211 workholding catalog for information about other Enerpac products.

## Enerpac Worldwide Locations

### Australia

ENERPAC,  
Applied Power Australia Ltd.  
Block V Unit 3  
Regents Park Estate  
391 Park Road  
Regents Park NSW 2143  
(P.O. Box 261) Australia  
Tel: +61 297 438 988  
Fax: +61 297 438 648

### Canada

Applied Power Canada Ltd.  
6615 Ordan Drive, Unit 14-15  
Mississauga, Ontario L5T 1X2  
Tel: +1 905 564 5749  
Fax: +1 905 564 0305

### Toll Free:

Tel: +1 800 268 4987  
Fax: +1 800 461 2456

### China

Applied Power China Ltd.  
1F, 269 Fute N. Road  
Waigaoqiao Free Trade Zone  
Pudong New District  
Shanghai, 200 131  
China  
Tel: +86 21 5866 9099  
Fax: +86 21 5866 7156

### France, Turkey, Greece, Africa, Middle East

ENERPAC S.A.  
B.P. 200  
Parc d'Activités  
du Moulin de Massy  
F-91882 Massy CEDEX (Paris)  
France  
Tel: +33 1 601 368 68  
Fax: +33 1 692 037 50

### Germany, Switzerland, Austria, Eastern Europe

ENERPAC  
Applied Power GmbH  
P.O. Box 300113  
D-40401 Düsseldorf  
Germany  
Tel: +49 211 471 490  
Fax: +49 211 471 49 28

### Hong Kong

ENERPAC  
Room 907 Workingberg  
Commercial Building  
41-47 Marble Road  
North Point  
Tel: +852-2561 6295  
Fax: +852-2561 6772

### India

ENERPAC  
Hydraulics (India) Pvt Ltd  
Plot No. A-571  
MIDC, TTC Industrial Area  
Mahape-400 701  
Navi Mumbai, India  
Tel: +91 22 769 47 78  
Fax: +91 22 769 84 73

### Italy

ENERPAC  
Applied Power Italiana S.p.A.  
Via Canova 4  
20094 Corsico (Milano)  
Tel: +39 2 486 111 00  
Fax: +39 2 486 012 88

### Japan

Applied Power Japan Ltd.  
1-1-11, Shimomae  
Toda-shi  
Saitama Pref.  
Japan 335-0016  
Tel: +81-48-430-2311  
Fax: +81-48-430-1117

### Mexico

ENERPAC Applied Power  
Mexico S.A. de C.V.  
Avenida Principal  
La Paz #100  
Fracc. Industrial La Paz  
42092 Pachuca, Hidalgo  
Tel: +52 771 337 00  
Fax: +52 771 838 00

### The Netherlands, Belgium, Luxembourg, Sweden, Denmark, Norway, Finland, United Kingdom, Ireland

ENERPAC B.V.  
Storkstraat 25  
P.O. Box 269, 3900 AG Veenendaal  
The Netherlands  
Tel: +31 318 535 911  
Fax: +31 318 525 613  
+31 318 535 848  
United Kingdom  
Tel: +44 01527 598 900  
Fax: +44 01527 585 500

### Singapore

Applied Power Asia Pte Ltd  
No. 8, Ang Mo Kio,  
Industrial Park 2  
#01-00  
Singapore 569500  
Thomson Road  
P.O. Box 114  
Singapore 915704  
Tel: +65 484 5108  
Fax: +65 484 5669

### South Korea

ENERPAC  
Applied Power Korea Ltd.  
163-12 Dodang-Dong  
Wonmi-Ku, Buchun-shi  
Kyunggi-Do  
Republic of Korea  
Tel: +82 32 675 08 36  
Fax: +82 32 675 30 02/73

### Spain, Portugal

ENERPAC  
Applied Power International S.A.  
Avda. Camino de lo Cortao  
21 - Nave 3  
San Sebastian de los Reyes  
28709 Madrid  
Spain  
Tel: +34 91 661 11 25  
Fax: +34 91 661 47 89

### USA, Latin America and Caribbean

ENERPAC  
P.O. Box 3241  
6101 N. Baker Road  
Milwaukee, WI 53209 USA  
Tel: +1 262 781 6600  
Fax: +1 262 781 1049

### User inquiries:

+1 800 433 2766

### Distributor inquiries/orders:

+1 800 558 0530

042401

e-mail: [info@enerpac.com](mailto:info@enerpac.com)  
Internet: [www.enerpac.com](http://www.enerpac.com)

Your Enerpac Distributor: