



**Ideal for positioning and clamping parts.**

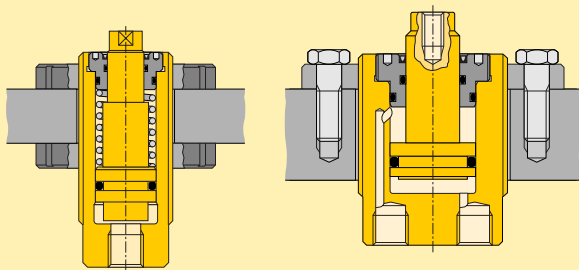
Threaded body cylinders provide high clamping forces in a compact body. Easy to install, saving you time and money.

# Threaded cylinders *Application & selection*

Shown: CST-9381, CST-571, CST-18251, CDT-18131, CDT-40251



➤ Threaded cylinders are designed for workpiece positioning, holding and ejecting applications where space is at a premium. Double-acting models are also suited to manufacturing applications, such as production punching.



■ Threaded cylinder, mounted with horizontal bracket to position the workpiece against the stops. Enerpac swing cylinders are then activated to clamp the work piece before machining operations begin.



## High clamping forces in a compact body

- Minimum cylinder diameter combined with maximized clamping forces
- Threaded body allows fine positioning and easy installation
- Nitro carburized bodies and internal plunger wipers allow maintenance-free, high-cycle performance
- Center-tapped plungers will hold workpiece contact buttons
- Single-acting models with spring return simplify hydraulic tubing requirements
- Double-acting models are recommended for high-cycle applications

## Product selection

Cylinder capacity at 5000 psi	Nominal stroke	Model number	Effective area		Oil capacity		
			in <sup>2</sup>		in <sup>3</sup>		
lbs	in		push	pull	push	pull	
<b>▼ Single-acting</b>							
380	–	0.28	<b>CST-271</b>	0.08	–	0.02	–
380	–	0.39	<b>CST-2101</b>	0.08	–	0.03	–
380	–	0.51	<b>CST-2131</b>	0.08	–	0.04	–
1190	–	0.28	<b>CST-571</b>	0.24	–	0.07	–
1190	–	0.51	<b>CST-5131</b>	0.24	–	0.12	–
1190	–	0.75	<b>CST-5191</b>	0.24	–	0.18	–
1190	–	0.98	<b>CST-5251</b>	0.24	–	0.24	–
1190	–	1.50	<b>CST-5381</b>	0.24	–	0.36	–
1950	–	0.28	<b>CST-971</b>	0.39	–	0.11	–
1950	–	0.51	<b>CST-9131</b>	0.39	–	0.20	–
1950	–	0.75	<b>CST-9191</b>	0.39	–	0.29	–
1950	–	0.98	<b>CST-9251</b>	0.39	–	0.38	–
1950	–	1.50	<b>CST-9381</b>	0.39	–	0.58	–
3950	–	0.51	<b>CST-18131</b>	0.79	–	0.40	–
3950	–	0.98	<b>CST-18251</b>	0.79	–	0.78	–
3950	–	1.50	<b>CST-18381</b>	0.79	–	1.18	–
3950	–	1.97	<b>CST-18501</b>	0.79	–	1.56	–
6110	–	0.59	<b>CST-27151</b>	1.22	–	0.72	–
6110	–	0.98	<b>CST-27251</b>	1.22	–	1.20	–
6110	–	1.97	<b>CST-27501</b>	1.22	–	2.40	–
8800	–	0.51	<b>CST-40131</b>	1.76	–	0.90	–
8800	–	0.98	<b>CST-40251</b>	1.76	–	1.73	–
8800	–	1.50	<b>CST-40381</b>	1.76	–	2.63	–
8800	–	1.97	<b>CST-40501</b>	1.76	–	3.46	–
<b>▼ Double-acting</b>							
3900	2330	0.51	<b>CDT-18131</b>	0.79	0.47	0.40	0.24
3900	2330	0.98	<b>CDT-18251</b>	0.79	0.47	0.78	0.46
3900	2330	1.50	<b>CDT-18381</b>	0.79	0.47	1.18	0.70
3900	2330	1.97	<b>CDT-18501</b>	0.79	0.47	1.56	0.93
6110	4080	0.59	<b>CDT-27151</b>	1.22	0.82	0.72	0.48
6110	4080	0.98	<b>CDT-27251</b>	1.22	0.82	1.20	0.81
6110	4080	1.97	<b>CDT-27501</b>	1.22	0.82	2.40	1.61
8800	5870	0.51	<b>CDT-40131</b>	1.76	1.17	0.90	0.60
8800	5870	0.98	<b>CDT-40251</b>	1.76	1.17	1.73	1.15
8800	5870	1.50	<b>CDT-40381</b>	1.76	1.17	2.63	1.75
8800	5870	1.97	<b>CDT-40501</b>	1.76	1.17	3.46	2.30

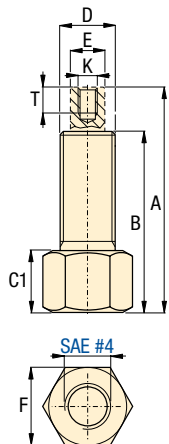
Note: - Seal material: Buna-N, Polyurethane.

- Minimum operating pressure for single-acting models (to overcome return spring force) is 580 psi.

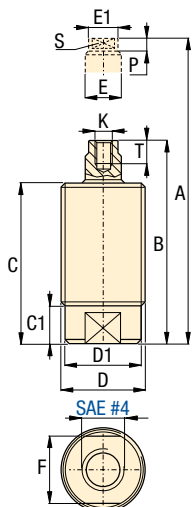
- Stroke may vary slightly due to manufacturing tolerances.



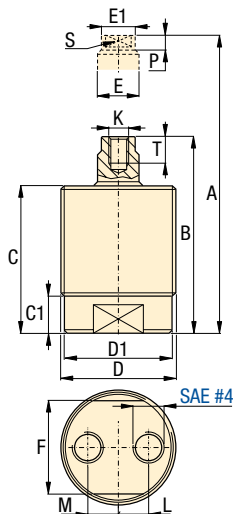
**CST-271, -2101, -2131**



**Other CST models**



**CDT models**

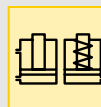


**Force: 380-8800 lbs**

**Stroke: .28-1.97 inch**

**Pressure: 580-5000 psi**

- E** Cilindros roscados
- F** Vérins corps filetés
- D** Einschraubzylinder



**Options**

**Accessories**



**Product dimensions in inches [ ]**

Model number	A Ext. height	B Retr. height	C	C1	D ø	D1 ø	E ø	E1 ø	F	K thread	L	M	P	S	T	lbs
<b>▼ Single-acting</b>																
CST-271	1.89	1.61	-	0.59	.500-20 UN	-	0.19	-	0.63	#6-32 UN	-	-	-	-	0.19	0.2
CST-2101	2.05	1.65	1.65	0.59	.500-20 UN	-	0.19	-	0.63	#6-32 UN	-	-	-	-	0.19	0.3
CST-2131	2.54	2.03	-	0.59	.500-20 UN	-	0.19	-	0.63	#6-32 UN	-	-	-	-	0.19	0.3
CST-571	2.29	2.01	1.85	0.30	.750-16 UN	0.71	0.31	0.28	0.63	#8-32 UN	-	-	0.16	0.24	0.28	0.3
CST-5131	2.86	2.35	2.19	0.30	.750-16 UN	0.71	0.31	0.28	0.63	#8-32 UN	-	-	0.16	0.24	0.28	0.4
CST-5191	3.28	2.53	2.36	0.30	.750-16 UN	0.71	0.31	0.28	0.63	#8-32 UN	-	-	0.16	0.24	0.28	0.5
CST-5251	3.87	2.89	2.76	0.30	.750-16 UN	0.71	0.31	0.28	0.63	#8-32 UN	-	-	0.16	0.24	0.28	0.7
CST-5381	5.17	3.67	3.50	0.30	.750-16 UN	0.71	0.31	0.28	0.63	#8-32 UN	-	-	0.16	0.24	0.28	0.9
CST-971	2.53	2.25	2.03	0.41	1.000-12 UN	1.02	0.47	0.43	0.63	.250-28 UN	-	-	0.22	0.35	0.31	0.6
CST-9131	3.01	2.50	2.28	0.41	1.000-12 UN	1.02	0.47	0.43	0.63	.250-28 UN	-	-	0.22	0.35	0.31	0.7
CST-9191	3.86	3.11	2.89	0.41	1.000-12 UN	1.02	0.47	0.43	0.63	.250-28 UN	-	-	0.22	0.35	0.31	0.8
CST-9251	4.41	3.41	3.19	0.41	1.000-12 UN	1.02	0.47	0.43	0.63	.250-28 UN	-	-	0.22	0.35	0.31	0.9
CST-9381	5.61	4.11	3.89	0.41	1.000-12 UN	1.02	0.47	0.43	0.63	.250-28 UN	-	-	0.22	0.35	0.31	1.0
CST-18131	3.27	2.76	2.50	0.49	1.313-16 UN	1.22	0.63	0.59	1.06	.313-24 UN	-	-	0.26	0.50	0.47	1.2
CST-18251	4.51	3.53	3.27	0.49	1.313-16 UN	1.22	0.63	0.59	1.06	.313-24 UN	-	-	0.26	0.50	0.47	1.3
CST-18381	5.91	4.41	4.02	0.49	1.313-16 UN	1.22	0.63	0.59	1.06	.313-24 UN	-	-	0.26	0.50	0.47	1.5
CST-18501	7.01	5.04	4.65	0.49	1.313-16 UN	1.22	0.63	0.59	1.06	.313-24 UN	-	-	0.26	0.50	0.47	1.7
CST-27151	3.46	2.87	2.62	0.53	1.625-16 UN	1.52	0.71	0.67	1.38	.375-16 UN	-	-	0.26	0.56	0.47	1.4
CST-27251	4.67	3.69	3.43	0.53	1.625-16 UN	1.52	0.71	0.67	1.38	.375-16 UN	-	-	0.26	0.56	0.47	2.0
CST-27501	7.71	5.74	5.45	0.53	1.625-16 UN	1.52	0.71	0.67	1.38	.375-16 UN	-	-	0.26	0.56	0.47	2.9
CST-40131	3.53	3.02	2.70	0.69	1.875-16 UN	2.38	0.87	0.75	1.63	.500-13 UN	-	-	0.31	0.68	0.59	2.2
CST-40251	4.76	3.78	3.46	0.69	1.875-16 UN	2.38	0.87	0.75	1.63	.500-13 UN	-	-	0.31	0.68	0.59	2.6
CST-40381	6.47	4.98	4.69	0.69	1.875-16 UN	2.38	0.87	0.75	1.63	.500-13 UN	-	-	0.31	0.68	0.59	3.3
CST-40501	7.45	5.48	5.16	0.69	1.875-16 UN	2.38	0.87	0.75	1.63	.500-13 UN	-	-	0.31	0.68	0.59	3.9
<b>▼ Double-acting</b>																
CDT-18131	3.19	2.68	2.42	0.63	1.875-16 UN	1.73	0.63	0.59	1.61	.313-24 UN	0.53	0.39	0.26	0.50	0.47	2.4
CDT-18251	4.21	3.23	2.97	0.63	1.875-16 UN	1.73	0.63	0.59	1.61	.313-24 UN	0.53	0.39	0.26	0.50	0.47	2.9
CDT-18381	9.44	3.74	3.48	0.63	1.875-16 UN	1.73	0.63	0.59	1.61	.313-24 UN	0.53	0.39	0.26	0.50	0.47	3.4
CDT-18501	10.38	4.21	3.95	0.63	1.875-16 UN	1.73	0.63	0.59	1.61	.313-24 UN	0.53	0.39	0.26	0.50	0.47	3.9
CDT-27151	3.25	2.74	2.46	0.67	2.125-16 UN	2.02	0.71	0.67	1.87	.375-16 UN	0.65	0.39	0.26	0.56	0.47	2.6
CDT-27251	4.23	3.25	2.97	0.67	2.125-16 UN	2.02	0.71	0.67	1.87	.375-16 UN	0.65	0.39	0.26	0.56	0.47	3.1
CDT-27501	6.17	4.22	3.95	0.67	2.125-16 UN	2.02	0.71	0.67	1.87	.375-16 UN	0.65	0.39	0.26	0.56	0.47	4.1
CDT-40131	3.49	2.98	2.66	0.69	2.500-16 UN	2.38	0.87	0.83	2.25	.500-13 UN	0.80	0.39	0.31	0.68	0.59	4.0
CDT-40251	4.43	3.45	3.13	0.69	2.500-16 UN	2.38	0.87	0.83	2.25	.500-13 UN	0.80	0.39	0.31	0.68	0.59	4.6
CDT-40381	5.45	3.96	3.64	0.69	2.500-16 UN	2.38	0.87	0.83	2.25	.500-13 UN	0.80	0.39	0.31	0.68	0.59	5.6
CDT-40501	6.76	4.79	4.47	0.69	2.500-16 UN	2.38	0.87	0.83	2.25	.500-13 UN	0.80	0.39	0.31	0.68	0.59	6.6

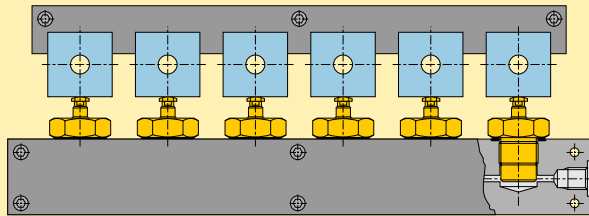
# Manifold Cylinders *Application & selection*

Shown: CSM-10131, CSM-571, CSM-18251



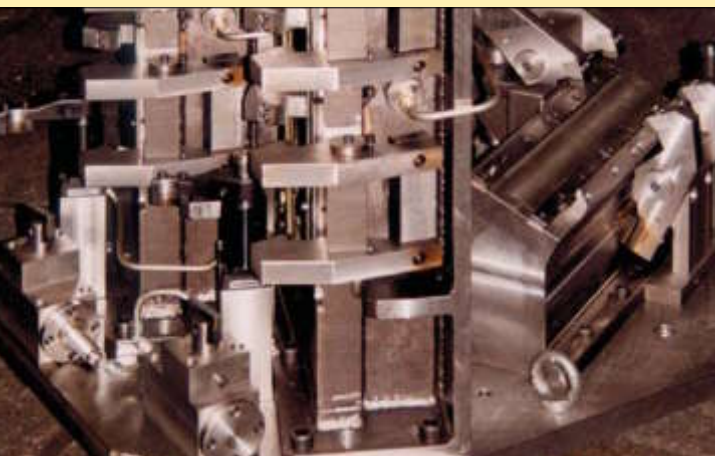
8905602

▶ These compact, fixture-integrated cylinders are designed for workpiece positioning, holding and ejecting applications where space is at a premium. No exposed tubing.



Six MS series manifold cylinders are used to clamp piston blocks for machining. The hydraulic flow to the cylinders is side-ported in order to minimize the required manifold thickness.

■ Threaded cylinders are used here to position engine manifolds for drilling, tapping and mill finish.

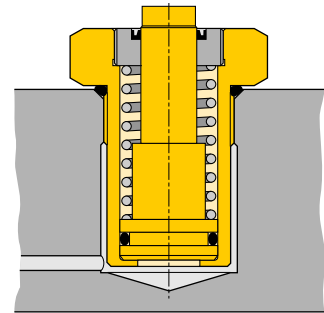


## Compact, fixture-integrated positioning and holding

- Design eliminates the need for fittings and tubing, minimizing space requirements and facilitating easy removal of chips and dirt
- Minimal cylinder height enables extremely compact fixture designs
- Cylinder body is fully recessed within the fixture allowing the workpiece to be positioned near-flush with the fixture surface, saving space
- Nitro carburized bodies and internal plunger wipers allow maintenance-free, high cycle performance
- Center-tapped plungers will hold workpiece contact buttons
- Standard SAE bodies make manifold cavity preparation easy

## i Manifold mount

Manifold cylinders are designed to be screwed directly into a manifold or fixture. Enerpac's manifold cylinders feature SAE dimensions, enabling the use of standard SAE porting tools for easy cavity preparation. An SAE O-ring, included with each cylinder, provides an effective seal between the cylinder and manifold.



## Product selection

Cylinder capacity at 5000 psi	Stroke	Model number	Effective area	Oil capacity
lbs	in		in <sup>2</sup>	in <sup>3</sup>
380	0.28	<b>CSM-271</b>	0.08	0.02
380	0.51	<b>CSM-2131</b>	0.08	0.04
1190	0.28	<b>CSM-571</b>	0.24	0.07
1190	0.51	<b>CSM-5131</b>	0.24	0.12
2590	0.28	<b>CSM-1071</b>	0.50	0.14
2590	0.51	<b>CSM-10131</b>	0.50	0.26
2590	0.75	<b>CSM-10191</b>	0.50	0.38
3900	0.51	<b>CSM-18131</b>	0.79	0.40
3900	0.98	<b>CSM-18251</b>	0.79	0.77
6110	0.59	<b>CSM-27151</b>	1.22	0.72
6110	0.98	<b>CSM-27251</b>	1.22	1.20

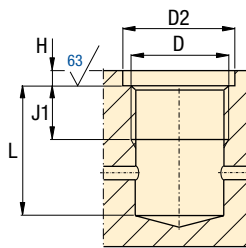
Note: - Seal material: Buna-N, Polyurethane.  
- Return springs in single acting cylinders should not be used to pull back heavy attachments consistently



**Installation dimensions** in inches [ ]

Model number	D thread SAE	D2 min. Ø	H max.	J1 min.	L min.
CSM-271	SAE#6 (0.563-18 UN)	0.97	0.039	0.50	1.02
CSM-2131	SAE#6 (0.563-18 UN)	0.97	0.039	0.50	1.43
CSM-571	SAE#10 (0.875-14 UN)	1.34	0.059	0.55	1.00
CSM-5131	SAE#10 (0.875-14 UN)	1.34	0.059	0.55	1.35
CSM-1071	SAE#12 (1.062-12 UN)	1.63	0.059	0.63	1.18
CSM-10131	SAE#12 (1.062-12 UN)	1.63	0.059	0.63	1.42
CSM-10191	SAE#12 (1.062-12 UN)	1.63	0.059	0.63	1.97
CSM-18131	SAE#16 (1.312-12 UN)	1.91	0.078	0.63	1.59
CSM-18251	SAE#16 (1.312-12 UN)	1.91	0.078	0.63	2.35
CSM-27151	SAE#20 (1.625-12 UN)	2.27	0.125	0.75	1.65
CSM-27251	SAE#20 (1.625-12 UN)	2.27	0.125	0.75	2.38

**Installation dimensions**



- Force:** 380-6110 lbs
- Stroke:** .28-.98 inch
- Pressure:** 580-5000 psi

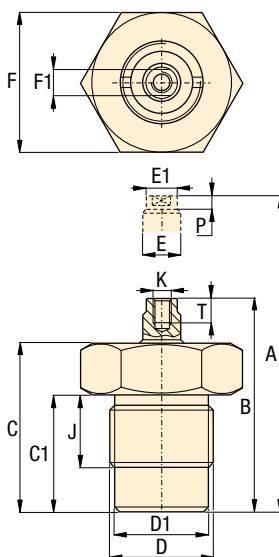
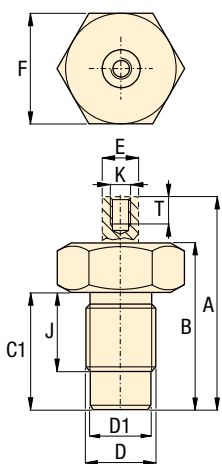
- E** Cilindros para colector
- F** Vérins pour bloc foré
- D** Einbauzylinder



Note: O-rings included. For additional cavity machining information, refer to SAE standards for straight internal thread, O-ring boss, or call Enerpac's Technical Service Department.

**CSM-271, -2131, -371, -3131**

**other models**



**Options**

**Accessories**  
Contact Bolts



**Important**

**Tighten manifold cylinders according to specifications in the instruction sheet.**

**Product dimensions** in inches [ ]

Model number	A Ext. height	B Retr. height	C	C1	D thread	D1 Ø	E Ø	E1	F	F1	J	K thread	P	T	lbs
CSM-271	1.56	1.28	-	0.98	.563-18 UN	0.47	0.19	-	0.75	-	0.47	#6-32 UN	-	0.19	0.2
CSM-2131	2.20	1.69	-	1.38	.563-18 UN	0.47	0.19	-	0.75	-	0.47	#6-32 UN	-	0.19	0.3
CSM-571	1.78	1.50	1.34	0.93	.875-14 UN	0.75	0.27	0.27	1	0.25	0.51	#8-32 UN	0.16	0.28	0.4
CSM-5131	2.34	1.83	1.67	1.26	.875-14 UN	0.75	0.27	0.27	1	0.25	0.51	#8-32 UN	0.16	0.28	0.6
CSM-1071	2.15	1.87	1.65	1.14	1.062-12 UN	0.94	0.47	0.43	1.25	0.38	0.59	.312-24 UN	0.22	0.39	1.1
CSM-10131	2.62	2.11	1.89	1.38	1.062-12 UN	0.94	0.47	0.43	1.25	0.38	0.59	.312-24 UN	0.22	0.39	1.3
CSM-10191	3.47	2.72	2.50	1.99	1.062-12 UN	0.94	0.47	0.43	1.25	0.38	0.59	.312-24 UN	0.22	0.39	1.4
CSM-18131	2.88	2.37	2.11	1.55	1.312-12 UN	1.18	0.63	0.59	1.61	0.63	0.63	.312-24 UN	0.26	0.47	1.1
CSM-18251	4.11	3.13	2.89	2.30	1.312-12 UN	1.18	0.63	0.59	1.61	0.63	0.63	.312-24 UN	0.26	0.47	1.3
CSM-27151	3.15	2.56	2.31	1.60	1.625-12 UN	1.52	0.71	0.67	2.17	0.59	0.79	.375-16 UN	0.26	0.47	1.50
CSM-27251	4.29	3.31	3.06	2.33	1.625-12 UN	1.52	0.71	0.67	2.17	0.59	0.79	.375-16 UN	0.26	0.47	2.00

# Cylinder accessories

Shown: Cylinder accessories



► These accessories are provided so that you can effectively position, mount and actuate Enerpac hydraulic cylinders according to your specific fixturing or production applications.

## For optimum mounting and fixture flexibility

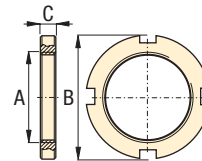
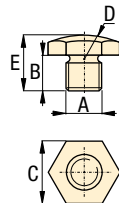
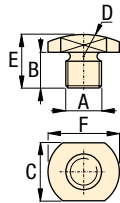
...to match specific applications

- **Contact bolts**  
Allow cylinders to act as a datum point in your clamping applications, and protect the piston when cylinders are used for pushing applications
- **Cylindrical flange nuts**  
For mounting threaded body cylinders in any position
- **Mounting brackets**  
For bolting cylinders to suit the application

BS-21, -41, -42, -61, -62, -82

other BS models

FN



### Product dimensions in inches [Ⓜ]

A thread	Model number	B	C	D	E	F
<b>▼ Spherical contact bolts</b>						
#6-32 UN	BS-21	.20	.18	.18	.45	.25
#8-32 UN	BS-41	.28	.25	.24	.56	.31
M4 x 0,7	BS-42	.20	.24	.39	.31	.31
.250-28 UN	BS-61	.25	.35	.59	.39	.47
M6 x 1,0	BS-62	.25	.35	.59	.39	.47
.313-24 UN	BS-81	.27	.56	.79	.28	-
M8 x 1,25	BS-82	.25	.51	.79	.41	.63
.375-16 UN	BS-91	.50	.50	.50	.75	-
.500-13 UN	BS-101	.49	.87	1.18	.73	-
M10 x 1,5	BS-102	.25	.67	.91	.43	-

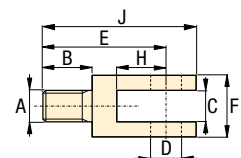
A thread	Model number	B	C
<b>▼ Jam nuts</b>			
0.500-20 UN	FN-121	1.10	0.24
M12 x 1,5	FN-122	1.10	0.24
0.750-16 UN	FN-201	1.42	0.31
M20 x 1,5	FN-202	1.42	0.31
1.000-12 UN	FN-251	1.75	0.38
1.125-16 UN	FN-281	1.75	0.38
M28 x 1,5	FN-282	1.97	0.39
1.125-16 UN	FN-301	1.97	0.39
M30 x 1,5	FN-302	1.97	0.39
1.313-16 UN	FN-331	1.88	0.25
1.375-18 UN	FN-351	1.88	0.25
M35 x 1,5	FN-352	2.17	0.43
1.625-16 UN	FN-421	2.25	0.33
M42 x 1,5	FN-422	2.44	0.47
1.875-16 UN	FN-481	2.50	0.50
M48 x 1,5	FN-482	2.95	0.51
2.125-16 UN	FN-551	3.13	0.38
M55 x 1,5	FN-552	3.15	0.51
2.500-16 UN	FN-651	3.25	0.38
M65 x 1,5	FN-652	3.74	0.55
3.125-16 UN	FN-801	4.13	0.50
M80 x 2,0	FN-802	4.53	0.63

■ Enerpac worksupport locked in position using an FN series self-locking flange nut.



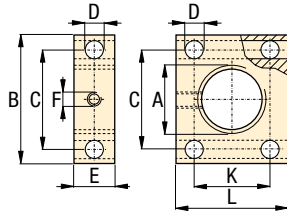
### Product dimensions in inches [Ⓜ]

A thread	Model number	B	C	D	E	F	H	J
<b>▼ Yoke</b>								
.312-24 UN	Y-3121	.50	.31	.31	1.25	.63	.50	1.88





**MF models**

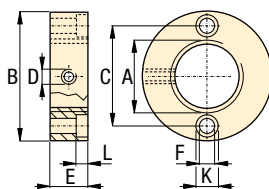


- E** Accesorios de cilindro
- F** Accessoires pour vérins
- D** Zubehör für Zylinder

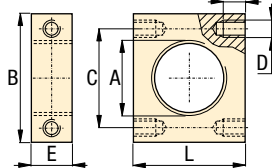
**Product dimensions** in inches [ ]

A thread	Model number	B	C	D ø	E	F	K	L
<b>▼ Mounting flanges – Rectangular</b>								
0.500-20 UN	<b>MF-121</b>	1.50	1.00	0.25	1.00	#10-24	1.00	1.50
M12 x 1,5	<b>MF-122</b>	1.57	0.98	0.25	0.98	M4 X 0,7	0.98	1.57
0.750-16 UN	<b>MF-201</b>	2.25	1.50	0.38	1.50	#10-24	1.50	2.25
M20 x 1,5	<b>MF-202</b>	2.56	1.75	0.40	1.57	M4 X 0,7	1.77	2.56
1.000-12 UN	<b>MF-251</b>	2.50	1.75	0.38	1.50	#10-24	1.75	2.50
1.125-16 UN	<b>MF-281</b>	2.75	2.00	0.38	1.50	#10-24	2.00	2.75
M28 x 1,5	<b>MF-282</b>	2.95	2.00	0.40	1.57	M4 X 0,7	2.00	2.95
1.313-16 UN	<b>MF-331</b>	3.00	2.25	0.38	1.50	#10-24	2.25	3.00
1.375-18 UN	<b>MF-351</b>	3.00	2.25	0.38	1.50	#10-24	2.25	3.00
M35 x 1,5	<b>MF-352</b>	3.15	2.25	0.40	1.57	M6 X 1,0	2.25	3.15
1.625-16 UN	<b>MF-421</b>	3.25	2.50	0.38	1.50	.25-20 UN	2.50	3.25
M42 x 1,5	<b>MF-422</b>	3.54	2.50	0.40	1.57	M6 X 1,0	2.50	3.54
1.875-16 UN	<b>MF-481</b>	3.50	2.75	0.38	1.50	.25-20 UN	2.75	3.50
M48 x 1,5	<b>MF-482</b>	3.74	2.75	0.40	1.57	M6 X 1,0	2.75	3.74
2.125-16 UN	<b>MF-551</b>	4.00	3.00	0.44	1.75	.25-20 UN	3.00	4.00
M55 x 1,5	<b>MF-552</b>	4.33	3.25	0.44	1.75	M6 X 1,0	3.25	4.33
2.500-16 UN	<b>MF-651</b>	4.50	3.50	0.44	1.75	.25-20 UN	3.50	4.50
M65 x 1,5	<b>MF-652</b>	4.53	3.50	0.44	1.75	M6 X 1,0	3.50	4.53
3.125-16 UN	<b>MF-801</b>	5.00	4.00	0.44	1.75	.25-20 UN	4.00	5.00
M80 x 2,0	<b>MF-802</b>	5.31	4.25	0.44	1.75	M6 X 1,0	4.25	5.31

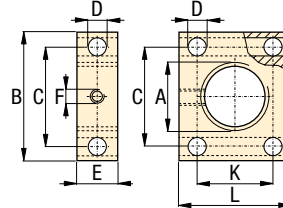
**AW-53, -121**



**AW-102**



**AW-51**

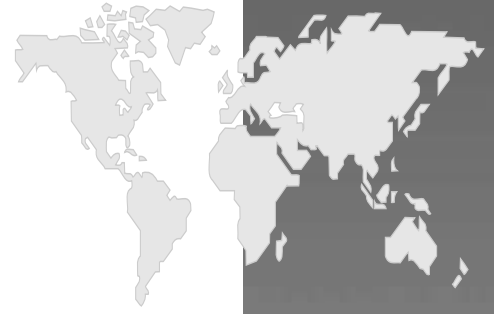


**Product dimensions** in inches [ ]

A thread	Model number	B	C	D thread	E	F	K	L
<b>▼ Mounting brackets – Cylindrical</b>								
1.500-16 UN	<b>AW-53</b>	3.00	2.25	.250-20 UN	.75	.28	.41	.31
2.750-16 UN	<b>AW-121</b>	4.50	3.00	.250-20 UN	.75	.34	.50	.38
<b>▼ Mounting brackets – Rectangular</b>								
2.250-14 UN	<b>AW-102</b>	3.25	3.00	.437-20 UN	1.25	.62	–	4.00

A thread	Model number	B	C	D ø	E	F thread	K	L
<b>▼ Mounting flanges – Rectangular</b>								
1.500-16 UN	<b>AW-51</b>	2.75	2.12	.41	1.00	.250-20 UN	1.62	2.25

# Threaded Body Cylinders



**ENERPAC**

## The full Enerpac Workholding line

### Cylinders

- Swing Cylinders
- Work Supports
- Collet-Lok®
- Pull Cylinders
- Threaded Body
- Manifold Mount
- Block
- Pull Down
- Hollow Plunger

### Pumps

- Manual
- Electric Driven
- Compressed Air Driven

### Valves and accessories

- Manual Directional Valves
- Solenoid Directional Valves
- Pressure Control Valves
- Flow Control Valves
- Hoses and Couplers
- Gauges
- Fittings
- Manifolds

### 2D and 3D CAD files

CAD files are available for many Enerpac workholding products. Visit the products section at:

[www.enerpac.com](http://www.enerpac.com)

e-mail: [info@enerpac.com](mailto:info@enerpac.com)

Internet: [www.enerpac.com](http://www.enerpac.com)

[techservices@enerpac.com](mailto:techservices@enerpac.com)



See the *Enerpac Workholding Catalog* for information about other Enerpac products.



See the new *Enerpac E324 Industrial Tools* catalog for information about other Enerpac high-force tools.

## Enerpac Worldwide Locations

### Australia

ENERPAC, Applied Power Australia Ltd.  
Block V Unit 3  
Regents Park Estate  
391 Park Road  
Regents Park NSW 2143  
(P.O. Box 261) Australia  
Tel: +61 297 438 988  
Fax: +61 297 438 648

### Canada

Actuant Canada Corporation  
6615 Ordan Drive,  
Unit 14-15  
Mississauga, Ontario  
L5T 1X2  
Tel: +1 905 564 5749  
Fax: +1 905 564 0305  
**Toll Free:**  
Tel: +1 800 268 4987  
Fax: +1 800 461 2456  
**Technical Inquiries:**  
[techservices@enerpac.com](mailto:techservices@enerpac.com)

### China

Applied Power China Ltd.  
1F, 269 Fute N. Road  
Waigaoqiao Free Trade Zone  
Pudong New District  
Shanghai, 200 131  
China  
Tel: +86 21 5866 9099  
Fax: +86 21 5866 7156

Applied Power China  
(Beijing)  
709A Xin No. 2  
Diyang Building  
Dong San Huan North Rd.  
Beijing City, 100028  
China  
Tel: +86 10 845 36166  
Fax: +86 10 845 36220

### France, Turkey, Greece,

**Africa, Middle East**  
ENERPAC S.A.  
B.P. 200  
Parc d'Activités  
du Moulin de Massy  
F-91882 Massy CEDEX  
(Paris) France  
Tel: +33 1 601 368 68  
Fax: +33 1 692 037 50

### Germany, Switzerland, Austria, Eastern Europe

ENERPAC  
Applied Power GmbH  
P.O. Box 300113  
D-40401 Düsseldorf  
Germany  
Tel: +49 211 471 490  
Fax: +49 211 471 49 28

### India

ENERPAC  
Hydraulics (India) Pvt Ltd  
Plot No. A-571  
MIDC, TTC Industrial Area  
Mahape-400 701  
Navi Mumbai, India  
Tel: +91 22 778 1779  
Fax: +91 22 778 1473

### Italy

ENERPAC  
Applied Power Italiana  
S.p.A.  
Via Canova 4  
20094 Corsico (Milano)  
Tel: +39 02 4861 111  
Fax: +39 02 4860 1288

### Japan

Applied Power Japan Ltd.  
1-1-11, Shimomae  
Toda-shi  
Saitama Pref.  
Japan 335-0016  
Tel: +81-48-430-2311  
Fax: +81-48-430-1117

### Mexico

ENERPAC Applied Power  
Mexico S. de R.L. de C.V.  
Avenida Principal  
La Paz #100  
Fracc. Industrial La Paz  
42092 Pachuca, Hidalgo  
Tel: +52 771 71 33700  
Fax: +52 771 71 35232

### The Netherlands, Belgium, Luxembourg, Sweden, Denmark, Norway, Finland, United Kingdom, Ireland

ENERPAC B.V.  
Storkstraat 25  
P.O. Box 269, 3900 AG  
Veenendaal  
The Netherlands  
Tel: +31 318 535 911  
Fax: +31 318 525 613  
+31 318 535 848  
UK, Ireland  
Tel: +44 01527 598 900  
Fax: +44 01527 585 500

### Singapore

Applied Power Asia Pte Ltd  
No. 8, Ang Mo Kio,  
Industrial Park 2  
#01-00  
Singapore 569500  
Thomson Road  
P.O. Box 114  
Singapore 915704  
Tel: +65 6484 5108  
Fax: +65 6484 5669

### South Korea

ENERPAC  
Applied Power Korea Ltd.  
163-12 Dodang-Dong  
Wonmi-Ku, Buchun-shi  
Kyunggi-Do  
Republic of Korea  
Tel: +82 32 675 08 36  
Fax: +82 32 675 30 02/73

### Spain, Portugal

ENERPAC  
Applied Power International  
S.A.  
Avda. Camino de lo Cortao  
21 - Nave 3  
San Sebastian de los  
Reyes  
28709 Madrid

### Spain

Tel: +34 91 661 11 25  
Fax: +34 91 661 47 89

### USA, Latin America and Caribbean

ENERPAC  
P.O. Box 3241  
6100 N. Baker Road  
Milwaukee, WI 53209 USA  
Tel: +1 262 781 6600  
Fax: +1 262 783 9562

### User inquiries:

+1 800 433 2766

### Distributor

**inquiries/orders:**

+1 800 558 0530

### Technical Inquiries:

[techservices@enerpac.com](mailto:techservices@enerpac.com)

020702

Your Enerpac Distributor: