

ENERPAC 

Pivoting T-Arm for Swing Cylinders



ENERPAC[®]
WORKHOLDING



Increase Your Quality and Production

Enerpac pivoting T-Arms provide solutions
to clamping in tight spaces.

Pivoting T-Arms *for swing cylinders*

Shown: CAC202 with CAPT202, CAC352 with CAPT352



▶ CAC series Collar

- High strength alloy steel construction
- 40 Durometer silicone pad provides pivoting action and protection against contamination
- Collar can be installed and secured without removing cylinder from fixture

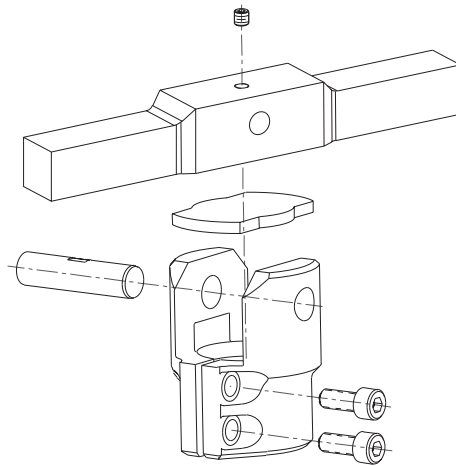
▶ CAPT series Arm

- High strength, yet easily machinable
- Length can be shortened to meet your specific needs
- Custom arms can be made using supplied dimensions

Versatile and easy to install

- Two piece design allows for quick and precise positioning of clamp arm
- Allows two parts to be clamped with only one cylinder
- Pivoting of clamp arm in either direction allows for large differences in workpiece height
- CAC series collar attaches to swing cylinder plunger
- CAPT series arm attaches to collar and clamps workpiece

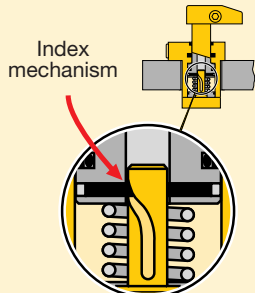
CAC series collar—CAPT series arm



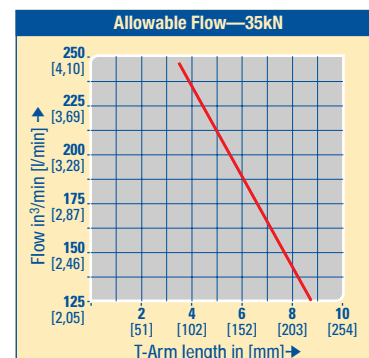
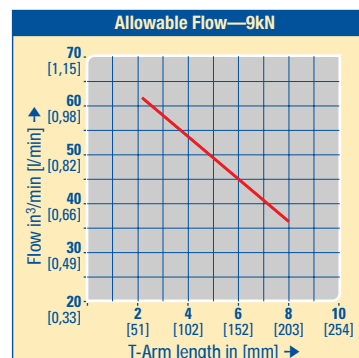
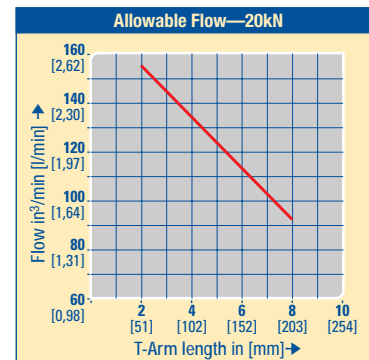
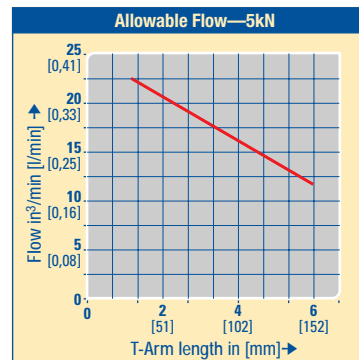
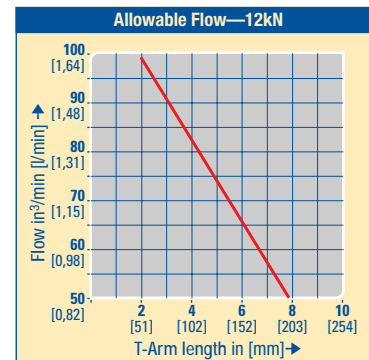
⚠ Important

Do not exceed maximum oil flow

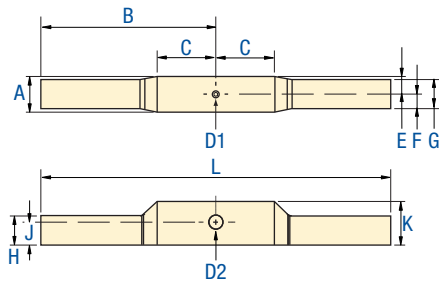
If flow rates are exceeded, swing cylinder indexing mechanism may be permanently damaged.



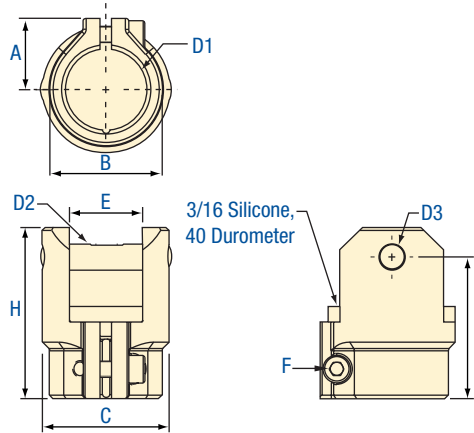
When designing custom clamp arms, the flow rates must be further reduced. This rating should be in proportion to the mass and the center of gravity of the clamp arm.



CAPT series Clamp arms



CAC series Collars



Force: 1250-7600 lbs
[5,6-33,8 kN]

Pressure: 500-5000 psi
35-350 bar
3,5-35 MPa

Options

Gauges



Flow control valves



Product selection – CAPT series arms

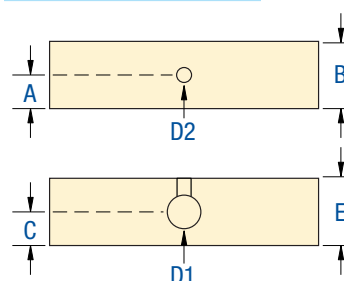
Model number	A in [mm]	B in [mm]	C in [mm]	D1 ∅ in [mm]	D2 ∅ in [mm]	E in [mm]	F in [mm]	G in [mm]	H in [mm]	J in [mm]	K in [mm]	L in [mm]	Clamping Force lbs [kN]
CAPT52	.614 [15,60]	3.0 [76,2]	1.004 [25,50]	M3 x 0,5	.239 [6,07]	.307 [7,80]	.250 [6,35]	.500 [12,70]	.500 [12,70]	.394 [10,00]	.75 [19,00]	6.0 [152,4]	1250 [5,6]
CAPT92	.866 [22,00]	4.0 [101,6]	1.500 [38,10]	M4 x 0,7	.318 [8,07]	.433 [11,00]	.360 [9,15]	.721 [18,30]	.721 [18,30]	.595 [15,10]	.87 [22,20]	8.0 [203,2]	2025 [9,0]
CAPT122	0.866 [22,00]	4.0 [101,6]	1.500 [38,10]	M4 x 0,7	.318 [8,07]	.433 [11,00]	.360 [9,15]	.721 [18,30]	.721 [18,30]	.595 [15,10]	.87 [22,20]	8.0 [203,2]	2600 [11,6]
CAPT202	1.114 [28,30]	4.0 [101,6]	1.252 [31,80]	M6 x 1,0	.397 [10,07]	.559 [14,20]	.433 [11,00]	.866 [22,00]	.866 [22,00]	.638 [16,20]	1.13 [28,60]	8.0 [203,2]	4200 [18,7]
CAPT352	1.366 [34,70]	4.5 [114,3]	.984 [25,00]	M6 x 1,0	.554 [14,07]	.685 [17,40]	.593 [15,05]	1.181 [30,00]	1.181 [30,00]	.724 [18,40]	1.37 [34,90]	9.0 [228,6]	7600 [33,8]

Product selection – CAC series collars

Model number	A in [mm]	B in [mm]	C in [mm]	D1 ∅ in [mm]	D2 ∅ in [mm]	D3 in [mm]	E in [mm]	F ∅ in [mm]	G in [mm]	H in [mm]	Clamping Force lbs [kN]	Max Tilt Angle degrees
CAC52	.65 [16,5]	.95 [24,2]	1.10 [28,0]	.63 [16,0]	.24 [6,0]	.239 [6,07]	.63 [16,1]	M4 x 0,7	1.26 [32,0]	1.57 [40,0]	1250 [5,6]	20
CAC92	.87 [22,0]	1.36 [34,6]	1.54 [39,0]	.99 [25,0]	.31 [8,0]	.318 [8,07]	.89 [22,5]	M5 x 0,8	1.71 [43,4]	2.07 [52,6]	2025 [9,0]	14
CAC122	.87 [22,0]	1.36 [34,6]	1.54 [39,0]	.88 [22,3]	.31 [8,0]	.318 [8,07]	.89 [22,5]	M5 x 0,8	1.71 [43,4]	2.07 [52,6]	2600 [11,6]	14
CAC202	1.07 [27,2]	1.83 [46,6]	2.15 [54,5]	1.26 [32,0]	.39 [10,0]	.397 [10,07]	1.13 [28,8]	M6 x 1,0	2.02 [51,2]	2.48 [63,0]	4200 [18,7]	10
CAC352	1.34 [34,0]	2.15 [54,6]	2.48 [63,0]	1.50 [38,0]	0.55 [14,0]	.554 [14,07]	1.39 [35,2]	M8 x 1,25	2.50 [63,4]	3.11 [79,0]	7600 [33,8]	10

Product selection – Custom arm dimensions

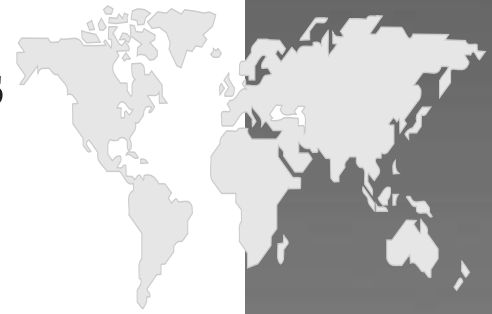
Custom arm dimensions



Clamping force lbs [kN]	A in [mm]	B in [mm]	C in [mm]	D1 ∅ in [mm]	D2* ∅ in [mm]	E in [mm]
1250 [5,6]	.31 [7,8]	.614 [15,6]	.3940 [10,0]	.239 [6,07]	M3 x 0,5	.748 [19,0]
2025 [9,0]	.43 [11,0]	.866 [22,0]	.5945 [15,1]	.318 [8,07]	M4 x 0,7	.874 [22,2]
2600 [11,6]	.43 [11,0]	.866 [22,0]	.5945 [15,1]	.318 [8,07]	M4 x 0,7	.874 [22,2]
4200 [18,7]	.56 [14,2]	1.114 [28,3]	.6378 [16,2]	.397 [10,07]	M6 x 1,0	1.126 [28,6]
7600 [33,8]	.69 [17,4]	1.366 [34,7]	.7244 [18,4]	.554 [14,07]	M6 x 1,0	1.374 [34,9]

*Note: D2∅ equals set screw thread size. Set screw must be long enough to secure pivot pin.

Pivoting T-Arm for Swing Cylinders



ENERPAC

The full Enerpac Workholding line

Cylinders

- Swing Cylinders
- Work Supports
- Collet-Lok™
- Pull Cylinders
- Threaded Body
- Manifold Mount
- Block
- Pull Down
- Hollow Plunger

Pumps

- Manual
- Electric Driven
- Compressed Air Driven

Valves and Accessories

- Manual Directional Valves
- Solenoid Directional Valves
- Pressure Control Valves
- Flow Control Valves
- Hoses and Couplers
- Gauges
- Fittings
- Manifolds

Mechanical Clamping

- Toggle Clamps
- Support Elements
- Indexing Elements
- Locating Devices
- Clamping Elements
- Operating Components
- Studs
- Nuts
- Washers



See the *Enerpac E323 Industrial Tools catalog* for information about other Enerpac high-force tools.



See the *Enerpac E211 Workholding catalog* for information about other Enerpac products.

Enerpac Worldwide Locations

Australia

ENERPAC, Applied Power Australia Ltd.
Block V Unit 3
Regents Park Estate
391 Park Road
Regents Park NSW 2143
(P.O. Box 261) Australia
Tel: +61 297 438 988
Fax: +61 297 438 648

Canada

Applied Power Canada Ltd.
6615 Ordan Drive, Unit 14-15
Mississauga, Ontario L5T 1X2
Tel: +1 905 564 5749
Fax: +1 905 564 0305
Toll Free:
Tel: +1 800 268 4987
Fax: +1 800 461 2456

China

Shanghai Blackhawk Machinery Co Ltd
15H Jinxuang Building
238 Nandan Road (E)
Shanghai, 200030
China
Tel: +86 21 5866 9099
Fax: +86 21 5866 7156

France, Turkey, Greece, Africa, Middle East

ENERPAC S.A.
B.P. 200
Parc d'Activités du Moulin de Massy
F-91882 Massy CEDEX (Paris) France
Tel: +33 1 601 368 68
Fax: +33 1 692 037 50

Germany, Switzerland, Austria, Eastern Europe

ENERPAC
Applied Power GmbH
P.O. Box 300113
D-40401 Düsseldorf
Germany
Tel: +49 211 471 490
Fax: +49 211 471 49 28

The Netherlands, Belgium, Luxembourg, Sweden, Denmark, Norway, Finland

ENERPAC B.V.
Storkstraat 25 /
P.O. Box 269, 3900 AG
Veenendaal
The Netherlands
Tel: +31 318 535 911
Fax: +31 318 525 613
+31 318 535 848

Hong Kong

ENERPAC
Room 907 Workingberg Commercial Building
41-47 Marble Road
North Point
Tel: +852-2561 6295
Fax: +852-2561 6772

India

ENERPAC
Hydraulics Technology (India) Pvt Ltd
Plot No. A-571
MIDC, TTC Industrial Area
Mahape-400 701
Navi Mumbai, India
Tel: +91 22 769 47 78
Fax: +91 22 769 84 73

Italy

ENERPAC
Applied Power Italiana S.p.A.
Via Canova 4
20094 Corsico (Milano)
Tel: +39 2 486 111 00
Fax: +39 2 486 012 88

Japan

Applied Power Japan Ltd.
10-17 Sasame
Kita-Machi
Toda-Shi,
Saitama #335
Tel: +81 048 421 2311
Fax: +81 048 421 8949

Mexico

ENERPAC Applied Power Mexico S.A. de C.V.
Avenida Principal
La Paz #100
Fracc. Industrial La Paz
42084 Pachuca, Hidalgo
Tel: +52 771 337 00
Fax: +52 771 838 00

Singapore

Applied Power Asia Pte Ltd
No. 8, Ang Mo Kio,
Industrial Park 2
#01-00
Singapore 569500
Thomson Road
P.O. Box 114
Singapore 915704
Tel: +65 484 5108
Fax: +65 454 5669

South Korea

ENERPAC
Applied Power Korea Ltd.
163-12 Dodang-Dong
Choong-Ku, Buchun-shi
Kyunggi-Do
Republic of Korea
Tel: +82 32 675 08 36
Fax: +82 32 675 30 02

Spain, Portugal

ENERPAC
Applied Power International S.A.
Avda. Camino de lo Cortao 21
San Sebastian de los Reyes
28709 Madrid
Spain
Tel: +34 91 661 11 25
Fax: +34 91 661 47 89

United Kingdom, Ireland

ENERPAC Limited
Unit 3, Colemeadow Road
North Moons Moat
Redditch
Worcester B98 9BP
United Kingdom
Tel: +44 01527 598 900
Fax: +44 01527 585 500

USA, Latin America and Caribbean

ENERPAC
P.O. Box 3241
6101 N. Baker Road
Milwaukee, WI 53209 USA
Tel: +1 262 781 6600
Fax: +1 262 781 1049

User inquiries:

+1 800 433 2766

Distributor

inquiries/orders:

+1 800 558 0530

061300

e-mail: info@enerpac.com
Internet: www.enerpac.com

Your Enerpac Distributor: