



01_006



The New Generation in Air Hydraulic Pump Technology

Half a century of experience in high pressure air hydraulic pump technology has resulted in a quieter pump that offers long lasting, trouble-free performance and durability.

Turbo II air-hydraulic pumps *Application & selection*

Shown: PAMG-5402PB, PACG-3102PB, PATG-3102PB, PATG-5105PB



▶ Turbo II air-hydraulic pumps generate the hydraulic pressure you need, using the air pressure you have available. The air saver piston reduces air consumption and operating costs.

They are ideal for providing the power and speed desired in simple clamping circuits. Turbo II air-hydraulic pumps are best suited to medium and lower cycle applications. At only 75 dBA, these new Turbo II series help to keep noise level to a minimum.

🌐 Select the required output

3000 series

- Hydraulic-air ratio 50:1 (350 bar hydraulic pressure at 8 bar air pressure)
- Hydraulic pressure range 85 - 350 (range of 35 - 85 bar available with diminished stall/restart performance)
- Maximum hydraulic oil flow 3,0 l/min

5000 series

- Hydraulic-air ratio 72:1 (350 bar hydraulic pressure at only 5,5 bar air pressure)
- Hydraulic pressure range 120 - 350 bar (range of 48 - 120 bar available with diminished stall/restart performance)
- Maximum hydraulic oil flow 2,0 l/min

Quick and powerful hydraulic supply in an economical air-powered unit

- On-demand stall-restart operation maintains system pressure, providing clamp security
- External adjustable pressure relief valve (behind sight glass)
- Internal pressure relief valve provides overload protection
- Reduced noise level to 75 dBA reduces operator fatigue
- Operating air pressure: 1,7-8,6 bar – enables pump to start at low air pressure
- Reinforced heavy-duty lightweight reservoir for applications in tough environments
- 5 valve mounting options provide flexibility in setup and operation
- Composite air piston seal allows operation on completely dry air supply

🌐 Select the required operation

PATG series

- Momentary (air-inlet) treadle for operation of single acting cylinders
- Provides advance, hold and retract functions

PACG series

- Momentary or continuous air inlet treadle
- Remote valve is required to operate single-acting cylinders
- Pressure gauge included

PASG series

- Momentary or continuous air inlet treadle
- Suitable for mounting any single or double acting valve with a CETOP 03 mounting configuration

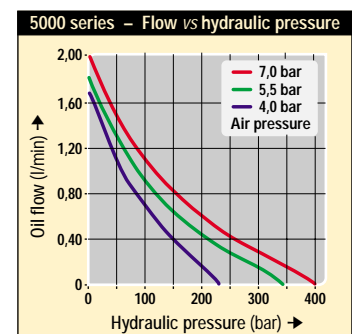
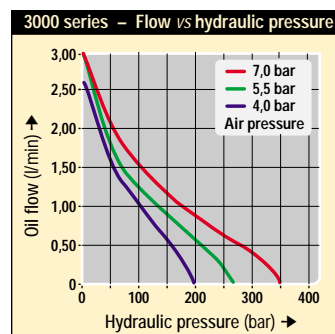
PAMG series

- Momentary or continuous air inlet treadle
- Manual 4-way, 3-position, tandem center valve for single or double acting operation

PARG series

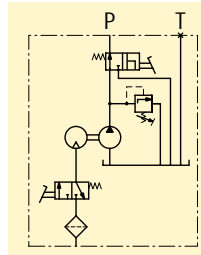
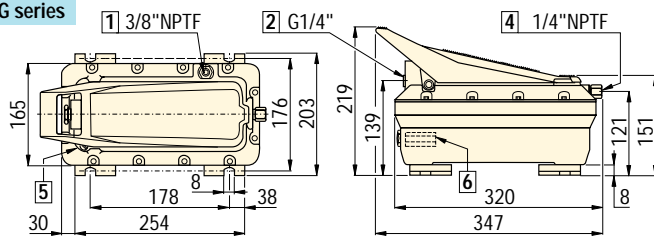
- Includes 4,5 m air pendant for remote control of single-acting cylinders
- Provides advance, hold and retract functions

🌐 Output Oil Flow





PATG series



Oil Flow: 2,0-3,0 l/min

Pressure: 85 - 350 bar

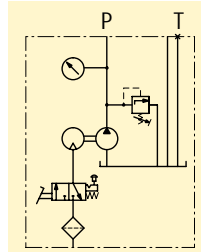
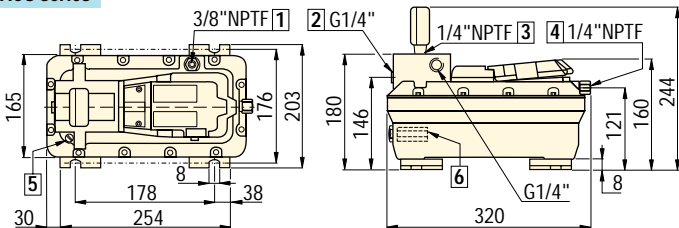
Air: 340 l/min

Reservoir: 2,4 - 5,0 litres

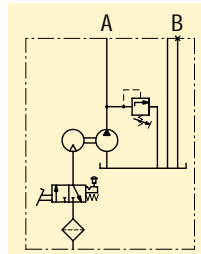
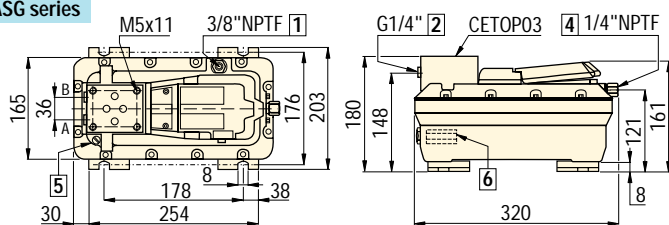
- E** Bombas hidroneumáticas
- F** Pompes hydro-pneumatiques
- D** Lufthydraulische pumpen

PACG series

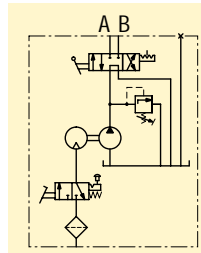
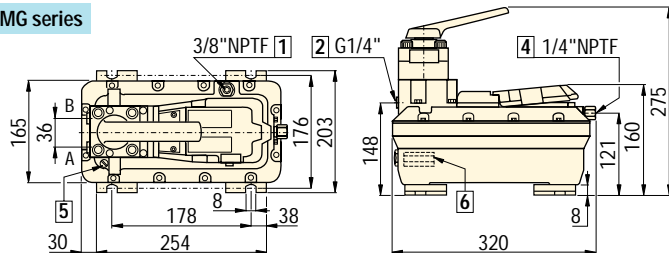
PAC series include pressure gauge G-2517L.



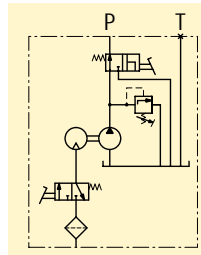
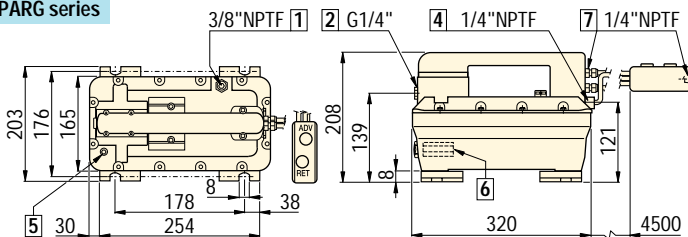
PASG series



PAMG series



PARG series



- 1** Auxiliary vent/tank fill port
- 2** Hydraulic output
- 3** Gauge mounting port
- 4** Swivel air input with filter
- 5** Filtered permanent tank vent
- 6** Adjustable pressure relief valve
- 7** Air pendant air input

Product Selection

Pump type	3000 series Model Number	Oil flow ¹⁾	5000 series Model Number	Oil flow ¹⁾	Max. hydraulic pressure	Reservoir size ²⁾	Usable oil capacity ²⁾		Air pressure range	Air consumption	kg
		3000 series		5000 series			litres				
		l/min		l/min	bar	litres	hor. mount.	vert. mount.	bar	l/min	
PATG	PATG-3102PB	3,0	PATG-5102PB	2,0	350	2,4	2,1	1,1	1,7-8,6	340	8,6
PACG	PACG-3002PB	3,0	PACG-5002PB	2,0	350	2,4	2,1	1,1	1,7-8,6	340	8,6
PASG	PASG-3002PB	3,0	PASG-5002PB	2,0	350	2,4	2,1	1,1	1,7-8,6	340	8,6
PAMG	PAMG-3402PB	3,0	PAMG-5402PB	2,0	350	2,4	2,1	1,1	1,7-8,6	340	11,3
PARG	PARG-3402PB	3,0	PARG-5402PB	2,0	350	2,4	2,1	1,1	1,7-8,6	340	10,5

¹⁾ At 0 bar hydraulic and 7 bar air pressure.

²⁾ Turbo II air-hydraulic pumps are also available with 5 litres reservoir. To order replace 2 in model number with 5.

Options

Large reservoir models

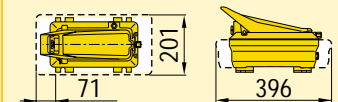


Enerpac Turbo air-hydraulic pumps are also available with large reservoir.

Usable oil capacity

Hor. mounted: 4,3 litres

Vert. mounted: 2,9 litres



To order your Turbo with a large reservoir, replace 2 in the model number with 5.

Gauges and accessories

128 ▶



Regulator-filter-lubricator

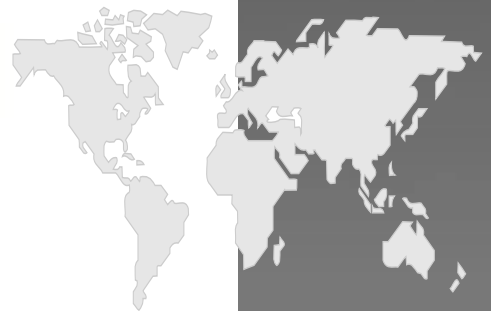
116 ▶



Important

For high cycle applications electric pumps are recommended.

Turbo II Air Hydraulic Pumps



ENERPAC 

The complete line

Swing Cylinders and Work Supports

- Upper flange swing cylinders
- Lower flange swing cylinders
- Threaded body swing cylinders
- Cartridge model swing cylinders
- Positive locking swing cylinders (*Collet-Lok*®)
- Clamp arms for swing cylinders
- Special swing cylinders
- Hydraulic advance work supports
- Spring advance work supports
- Positive locking work supports (*Collet-Lok*®)

Pull and Linear Cylinders

- Pull cylinders
- Threaded cylinders
- Manifold cylinders
- Block cylinders
- Pull down clamps
- Hollow plunger cylinders
- Positive clamping cylinders
- Universal cylinders

Power Sources

- Air hydraulic pumps
- Electric driven pumps
- Hand pumps
- Boosters
- Pressure intensifiers

Valves

- Directional control valves
- Flow control valves
- Pressure control valves
- Sequence valves
- Manifolds
- Accessory and Air valves

System Components

- Auto-coupler systems
- Rotary couplers
- Accumulators
- Pressure switches
- Gauges and accessories
- Hoses, Couplers, Manifolds
- Pressure Filters, Oil
- Fittings

Enerpac Worldwide Locations

Australia

Tel: +61 297 438 988
Fax: +61 297 438 648

Canada

Tel: +1 905 564 5749
Fax: +1 905 564 0305

Toll Free:

Tel: +1 800 268 4987
Fax: +1 800 461 2456

China

Tel: +86 21 5866 9099
Fax: +86 21 5866 7156

France, Turkey, Greece, Africa, Middle East

Tel: +33 1 601 368 68
Fax: +33 1 692 037 50

Germany, Switzerland, Austria, Eastern Europe

Tel: +49 211 471 490
Fax: +49 211 471 49 28

Hong Kong

Tel: +852-2561 6295
Fax: +852-2561 6772

India

Tel: +91 22 769 47 78
Fax: +91 22 769 84 73

Italy

Tel: +39 2 486 111 00
Fax: +39 2 486 012 88

Japan

Tel: +81-048-430-2311
Fax: +81-048-430-1117

Mexico

Tel: +52 771 337 00
Fax: +52 771 838 00

The Netherlands, Belgium, Luxembourg, Sweden, Denmark, Norway, Finland, United Kingdom, Ireland

Tel: +31 318 535 911
Fax: +31 318 525 613
+31 318 535 848

UK, Ireland

Tel: +44 01527 598 900
Fax: +44 01527 585 500

Singapore

Tel: +65 484 5108
Fax: +65 484 5669

South Korea

Tel: +82 32 675 08 36
Fax: +82 32 675 30 02/73

Spain, Portugal

Tel: +34 91 661 11 25
Fax: +34 91 661 47 89

USA, Latin America and Caribbean

Tel: +1 262 781 6600
Fax: +1 262 781 1049

User inquiries:

Tel: +1 800 433 2766
Distributor inquiries/orders:
Tel: +1 800 558 0530

Ref:April-24-2001E



The Full Enerpac Workholding Line

Ask for your free copy of the Enerpac Workholding catalog for information about solutions to your workholding needs. The catalog contains our full line of cylinders, clamps, pumps, valves and accessories, plus a CD-ROM filled with our 2D and 3D CAD files.



The Enerpac Industrial Tools Catalog

A complete range of quality high force tools for all industrial applications, with local availability and after-sales service anywhere in the world. This is what has made Enerpac the recognized global market leader in it's field.

- Cylinders • Pumps • System Components
- Valves • Presses • Pullers • Tools



e-mail:
info@enerpac.com
Internet:
www.enerpac.com

Your Enerpac Distributor: